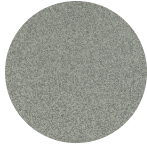


# Metro

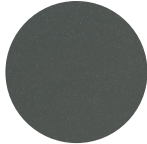
The Metro range is a hard-wearing matt porcelain tile, available in Dark Grey and Black Speckle in a 200×200 mm format, designed to deliver a durable and contemporary finish across both indoor and outdoor environments. Complete with coordinating skid and cove pieces, the range provides a practical, safety-focused solution ideal for wet areas and high-traffic commercial or residential applications.

# METRO

## COLOURS, FORMATS & FINISHES



Dark Grey



Black Speckle

MATT | P3

200 x 200mm	●	●
200 x 100mm Cove	●	●

FINISH: **MATT** | CATEGORY: PORCELAIN TILES | EDGE DETAIL: RECTIFIED | V RATING: V1



# Dark Grey

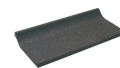
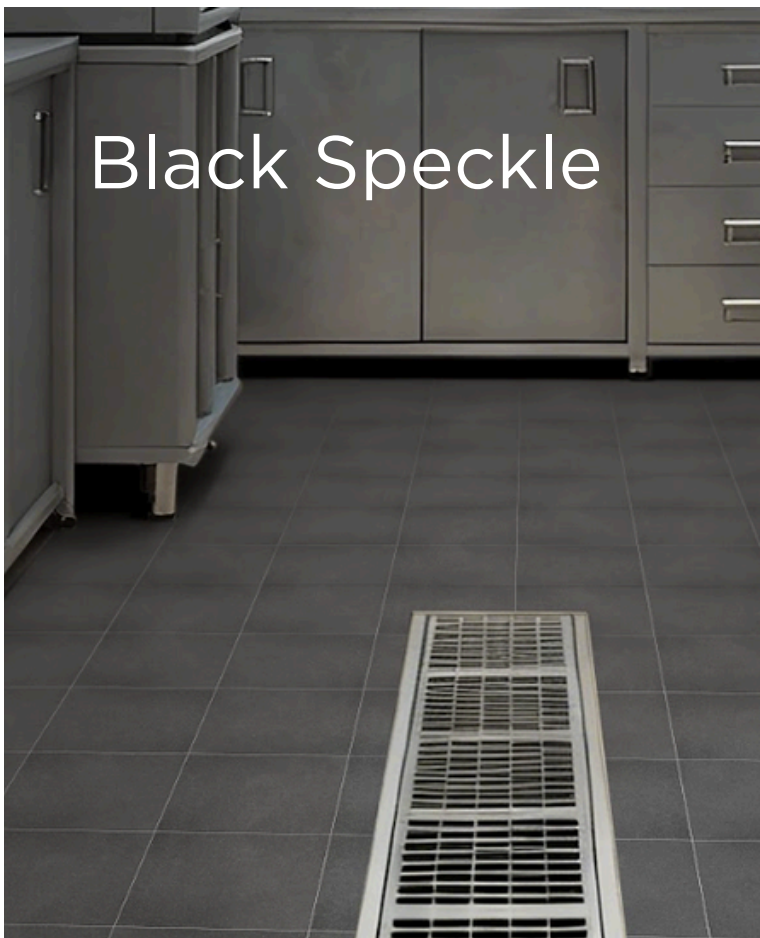


200 x 100mm Cove  
54737 (matt)



200 x 200mm  
54736 (matt)

# Black Speckle



200 x 100mm Cove  
54740 (matt)



200 x 200mm  
54739 (matt)

# Technical Specification

Properties	Test Method	Required Value	Value	Applies to
 Water absorption	EN ISO 10545-3	$\leq 0.5\%$	$\leq 0.31\%$	Full range
 Determination of dimensions	EN ISO 10545-2	Length and width $\pm 0.6\%$ Thickness $\pm 5.00\%$ Transmutation $\pm 0.5\%$	Length and width $\pm 0.2\%$ Thickness $\pm 2.1\%$ Transmutation $\pm 0.2\%$	Full range
 Breaking strength	EN ISO 10545-4	$\geq 1300$ N	$\geq 1310$ N	Full range
 Modulus of rupture	EN ISO 10545-4	$\geq 35$ N/mm <sup>2</sup>	$\geq 37.4$ N/mm <sup>2</sup>	Full range
 Abrasion resistance	EN ISO 10545-7	Report Abrasion Class	Class 3	Full range
 Slip resistance (wet pendulum test)	AS 4586-2013/ AMDT1-2017	N/A	TBC	Matt Textured
 Chemical resistance	EN ISO 10545-13	Min. GB	Class GA	Full range
 Stain resistance	ISO 10545-14	Min class 3	Class 5	Full range
 Origin	N/A	N/A	China	Full range
 Shade variation	N/A	N/A	V1	Full range

# Packing Information

Tile description		Quantity per box	Quantity per m2		Quantity per pallet	
Size (mm)	Texture	Pieces	Pieces	Weight	m2	boxes
200 x 200	Matt	25	25.00	18.00 kg	75.00	75
200 x 100 Cove	Matt	11	40.00	18.00 kg	N/A	80



*The data and information contained in these specification sheets are indicative only unless stated otherwise. As Japan Ceramics cannot control the conditions under which these products are manufactured, the specifications supplied should be considered as suggested guidelines only and are subject to batch variation. The information contained in these specification sheets should not be considered a warranty, expressed or implied, including, but not limited to, a warranty of merchantability or fitness for a particular purpose. To the maximum extent permitted by law, Japan Ceramics will not be responsible for damages of any nature resulting from the use or reliance upon the information contained in this data sheet. No express or implied warranties are given in respect of any specification provided herein other than those that cannot be excluded under the Australian Consumer Law.*