

# Miyako

The Miyako series was created by collecting handcrafted ceramic pieces and using them as the design foundation for its natural and distinctive textures. The range features six matt colours, each with 88 unique graphic faces, and eight gloss colours with 50 graphic faces, allowing for elegant and authentic environments suited to any interior or exterior style. Available in 50x150 mm and 100x150 mm in matt, and 50x150 mm in gloss, the collection is fully modular, offering exceptional versatility in how it can be laid and adapted across different surfaces. Miyako can be used both as a wall and floor tile. Made from high-quality porcelain, Miyako delivers outstanding durability, hygiene, and long-lasting performance while maintaining the warmth and character of handcrafted ceramic design.

# MIYAKO

## COLOURS, FORMATS & FINISHES



MATT | P3

Chalk WhiteCoastAmber BrownEtherForestVolcanic

|             |   |   |   |   |   |   |
|-------------|---|---|---|---|---|---|
| 50 x 150mm  | • | • | • | • | • | • |
| 100 x 150mm | • | • | • | • | • | • |



GLOSS

WhiteMorchellaPuraCoffeeGolden OrcheOil BlueBlue MoonCrystal Pink

|            |   |   |   |   |   |   |   |   |
|------------|---|---|---|---|---|---|---|---|
| 50 x 150mm | • | • | • | • | • | • | • | • |
|------------|---|---|---|---|---|---|---|---|

FINISH: **MATT** | CATEGORY: PORCELAIN TILES | EDGE DETAIL: RECTIFIED | V RATING: V4  
FINISH: **GLOSS** | CATEGORY: PORCELAIN TILES | EDGE DETAIL: RECTIFIED | V RATING: V4



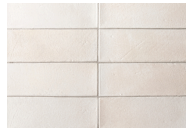




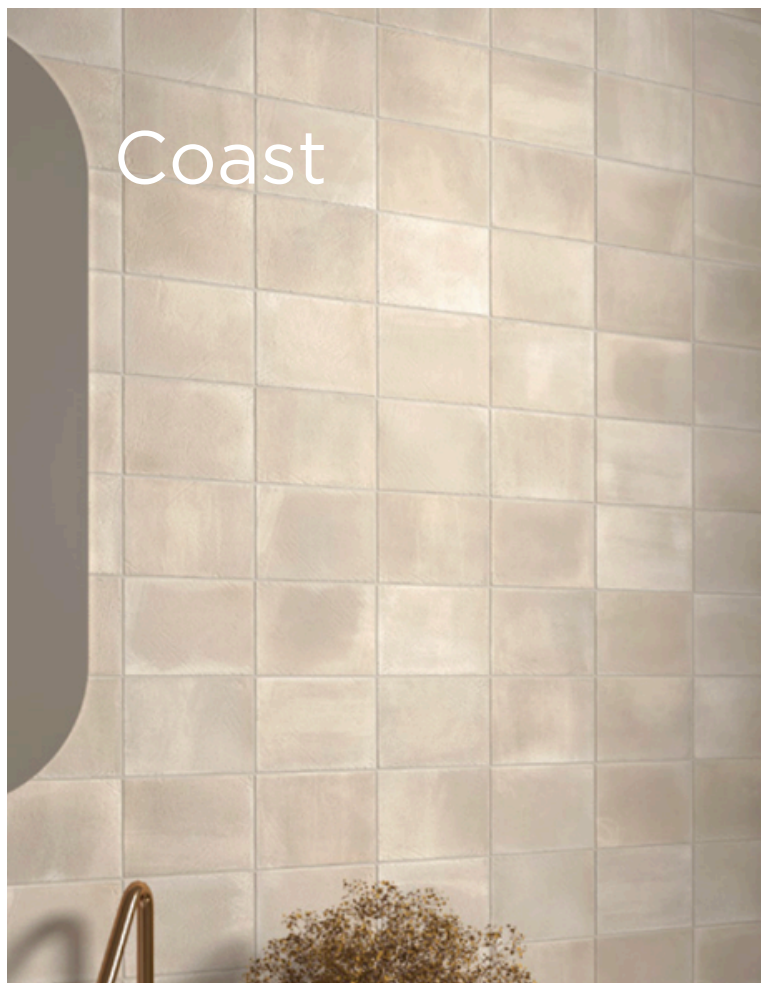
Chalk White



100 x 150mm  
54571 (matt) P3



50 x 150mm  
54573 (matt) P3



Coast



100 x 150mm  
54568 (matt) P3



50 x 150mm  
54569 (matt) P3

# Amber Brown



100 x 150mm  
54565 (matt) P3

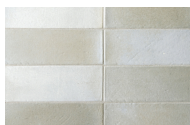


50 x 150mm  
54564 (matt) P3

# Ether



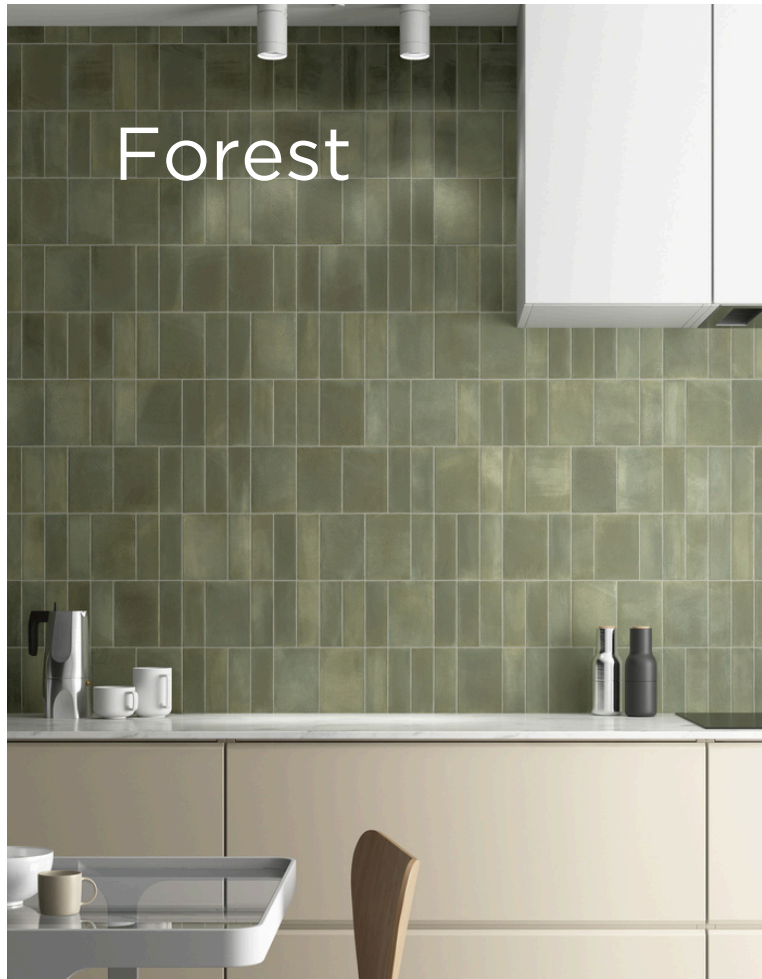
100 x 150mm  
54576 (matt) P3



50 x 150mm  
54577 (matt) P3



# Forest



100 x 150mm  
54578 (matt) P3



50 x 150mm  
54579 (matt) P3

# Volcanic



100 x 150mm  
54583 (matt) P3



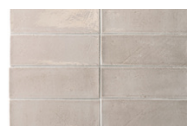
50 x 150mm  
54584 (matt) P3

White



50 x 150mm  
54572 (gloss)

Morchella



50 x 150mm  
54580 (gloss)



Pura



50 x 150mm  
54582 (gloss)

Coffee



50 x 150mm  
54567 (gloss)

# Golden Orche



50 x 150mm  
54589 (gloss)

# Oil Blue



50 x 150mm  
54581 (gloss)

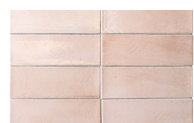


# Blue Moon







50 x 150mm  
54566 (gloss)

# Crystal Pink



50 x 150mm  
54567 (gloss)

# Technical Specification

|  | Properties                  | Test Method  | Required Value  | Value  | Applies to   |
|--|-----------------------------|--------------|---|--|--------------|
|    | Water absorption            | ISO 10545-3  | $\leq 0.5\%$  | $> 0.5\%$  | Full range   |
|    | Determination of dimensions | ISO 10545-2  | Length and width $\pm 0.75\%$<br>Thickness $\pm 5.00\%$ | Length and width $\pm 0.5\%$<br>Thickness $\pm 10\%$ | Full range   |
|    | Breaking strength           | ISO 10545-4  | $\geq 1300$ N   | $> 1300$ N   | Full range   |
|    | Modulus of rupture          | ISO 10545-4  | $\geq 35$ N/mm <sup>2</sup>                             | $> 35$ N/mm <sup>2</sup>                             | Full range   |
|  | Abrasion resistance         | ISO 10545-6  | Class 3 min   | Class 3  | Full range   |
|  | Chemical resistance         | ISO 10545-13 | GB min.   | GLA, GHB, GA   | All finishes |
|  | Stain resistance            | ISO 10545-14 | Class 3 min.  | Class 5  | Full range   |
|  | Origin                      | N/A          | N/A   | Spain  | Full range   |
|  | Shade variation             | N/A          | N/A   | V4   | Full range   |



# Packing Information

| Tile description |            | Quantity per box | Quantity per m2 |          | Quantity per pallet |       |
|------------------|------------|------------------|-----------------|----------|---------------------|-------|
| Size (mm)        | Texture    | Pieces           | Pieces          | Weight   | m2                  | boxes |
| 50 x 150         | Matt Gloss | 66               | 133.33          | 17.27 kg | 59.40               | 120   |
| 100 x 150        | Matt       | 40               | 66.67           | 17.33 kg | 57.60               | 96    |



The data and information contained in these specification sheets are indicative only unless stated otherwise. As ColorTile cannot control the conditions under which these products are manufactured, the specifications supplied should be considered as suggested guidelines only and are subject to batch variation. The information contained in these specification sheets should not be considered a warranty, expressed or implied, including, but not limited to, a warranty of merchantability or fitness for a particular purpose. To the maximum extent permitted by law, ColorTile will not be responsible for damages of any nature resulting from the use or reliance upon the information contained in this data sheet. No express or implied warranties are given in respect of any specification provided herein other than those that cannot be excluded under the Australian Consumer Law.