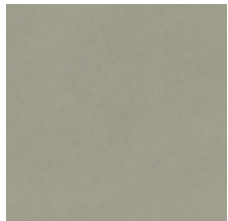


Bristol

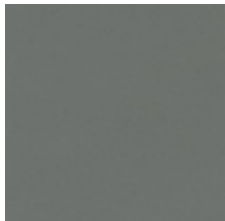
The Bristol range offers a minimalistic look. Available in 300 x 300mm and 450 x 450mm formats, this glazed tile is available in four colourways: beige, cement, cream and grey. Bristol is suitable for internal walls and floors, including wet areas.

BRISTOL

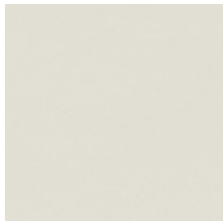
COLOURS



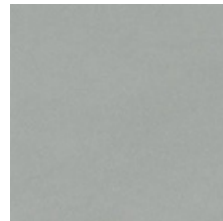
Beige



Cement

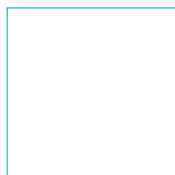


Cream



Grey

FORMATS



450 x 450mm



300 x 300mm

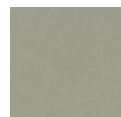
FINISH: **MATT** | CATEGORY: CERAMIC TILES | EDGE DETAIL: UNRECTIFIED | V RATING: V1

FINISH: **TEXTURED** | CATEGORY: CERAMIC TILES | EDGE DETAIL: UNRECTIFIED | V RATING: V1

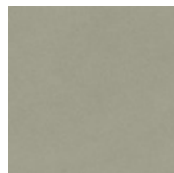




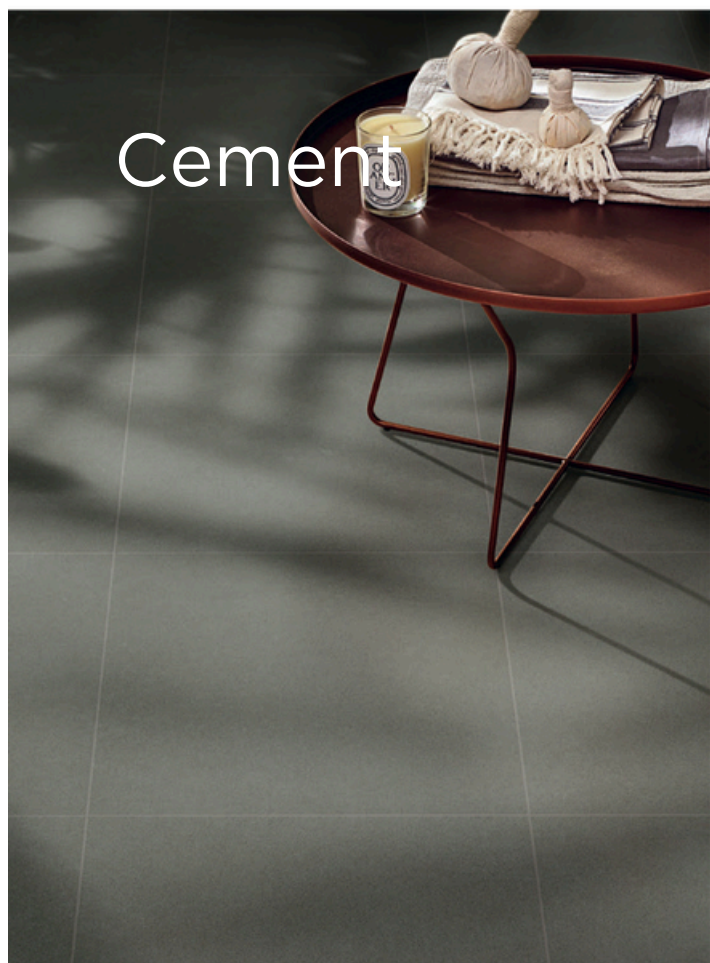
Beige



300 x 300mm
53822 (matt) P2



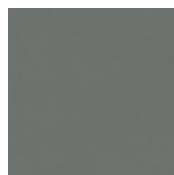
450 x 450mm
53818 (matt)P2
53826 (textured) P5



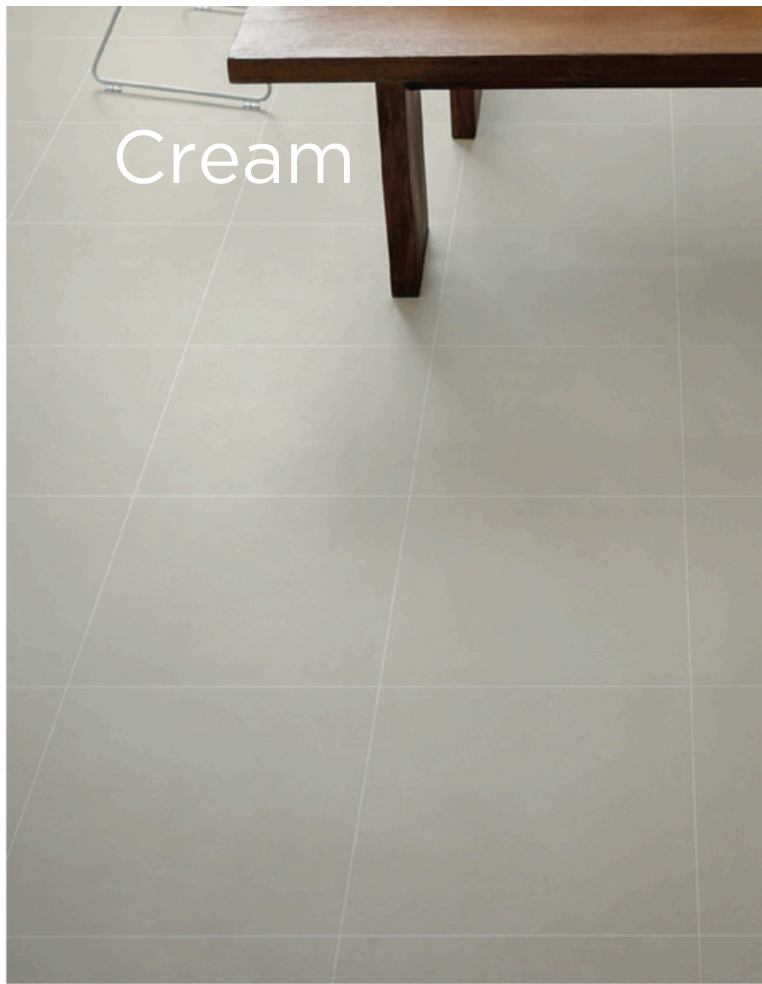
Cement



300 x 300mm
53823 (matt) P2



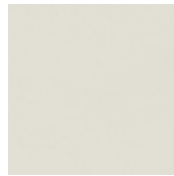
450 x 450mm
53821 (matt)P2
53827 (textured) P5



Cream



300 x 300mm
53824 (matt) P2



450 x 450mm
53819 (matt)P2
53828 (textured) P5



Grey



300 x 300mm
53825 (matt) P2



450 x 450mm
53820 (matt)P2
53829 (textured) P5

Technical Specification

	Properties	Test Method	Required Value	Value	Applies to
	Water absorption	ISO 10545-3	$\leq 0.5\%$	0.09%	Full range
	Determination of dimensions	ISO 10545-2	Length and width $\pm 0.5\%$ Thickness $\pm 5.00\%$	Length 0.02% Width 0.11% Thickness 1.4%	Full range
	Breaking strength	ISO 10545-4	≥ 1300 N	1940 N	Full range
	Modulus of rupture	ISO 10545-4	Minimum 35 MPa	44.4 MPa	Full range
	Abrasion resistance	ISO 10545-6	Class 3 min	Class 3	Full range
	Slip resistance (wet pendulum test)	AS 4586-2013/ AMDT1-2017	N/A	P2 – Matt P5 – Textured	Full range
	Chemical resistance	ISO 10545-13	GB min.	A, LA, HA	Full range
	Stain resistance	ISO 10545-14	Class 3 min.	Class 5	Full range
	Origin	N/A	N/A	China	Full range
	Shade variation	N/A	N/A	V1	Full range

Packing Information

Tile description		Quantityper box	Quantity per m2		Quantity per pallet	
Size (mm)	Texture	Pieces	Pieces	Weight	m2	boxes
300 x 300	Matt	12	11.11	18.90 kg	56.16	78
450 x 450	Matt Textured	5	4.94	17.38 kg	72.90	72



The data and information contained in these specification sheets are indicative only unless stated otherwise. As ColorTile cannot control the conditions under which these products are manufactured, the specifications supplied should be considered as suggested guidelines only and are subject to batch variation. The information contained in these specification sheets should not be considered a warranty, expressed or implied, including, but not limited to, a warranty of merchantability or fitness for a particular purpose. To the maximum extent permitted by law, ColorTile will not be responsible for damages of any nature resulting from the use or reliance upon the information contained in this data sheet. No express or implied warranties are given in respect of any specification provided herein other than those that cannot be excluded under the Australian Consumer Law.