

Kierrastone

A recent addition to our advanced tile technology collection is our Australian-made Kierrastone range. Identical to the natural look of concrete, this range is suitable for both internal and external floor applications, including wet areas. Kierrastone is available in four colourways – ash, charcoal, grey and white – and comes in a variety of sizes as well as matt or textured finishes. This range complements modern, contemporary, industrial and minimalist styles.

KIERRASTONE

COLOURS



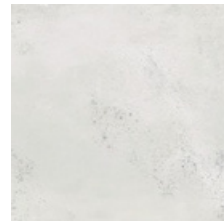
Ash



Charcoal

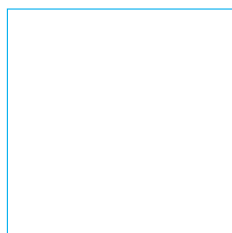


Grey

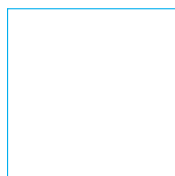


White

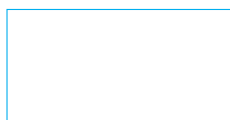
FORMATS



600 x 600mm
(10 Faces)



450 x 450mm
(15 Faces)



300 x 600mm
(20 Faces)



300 x 300mm
(40 Faces)

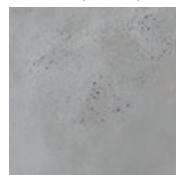
FINISH: **MATT** | CATEGORY: GLAZED FLOOR TILES | EDGE DETAIL: UNRECTIFIED | V RATING: V2
FINISH: **TEXTURED** | CATEGORY: GLAZED FLOOR TILES | EDGE DETAIL: UNRECTIFIED | V RATING: V2



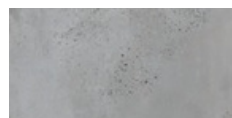
Ash



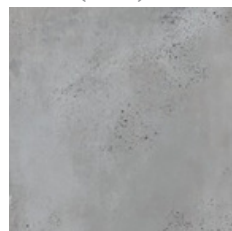
300 x 300mm
51545 (matt) P3



450 x 450mm
51556 (matt) P2
51560 (textured) P5



300 x 600mm
51549 (matt) P2

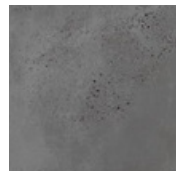


600 x 600mm
51563 (matt)P3
52362 (textured) P5

Charcoal



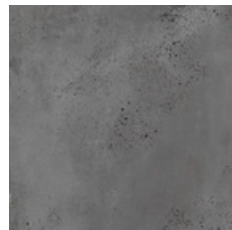
300 x 300mm
51546 (matt) P3



450 x 450mm
51557 (matt) P3
51561 (textured) P5



300 x 600mm
51550 (matt) P2

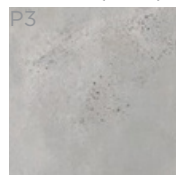


600 x 600mm
51564 (matt) P3
52365 (textured) P5

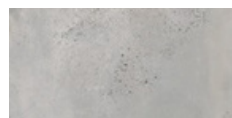
Grey



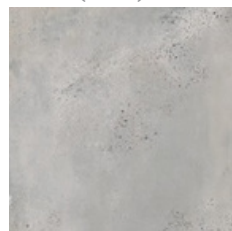
300 x 300mm
51544 (matt)



450 x 450mm
51555 (matt) P3
51559 (textured) P5

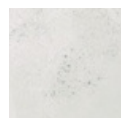


300 x 600mm
51548 (matt) P3

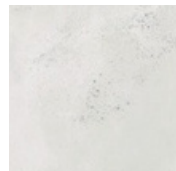


600 x 600mm
51562 (matt) P3
52364 (textured) P5

White



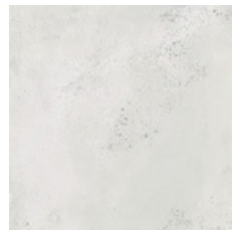
300 x 300mm
51547 (matt) P3



450 x 450mm
51558 (matt) P3
51708 (textured) P5












300 x 600mm
51551 (matt) P3



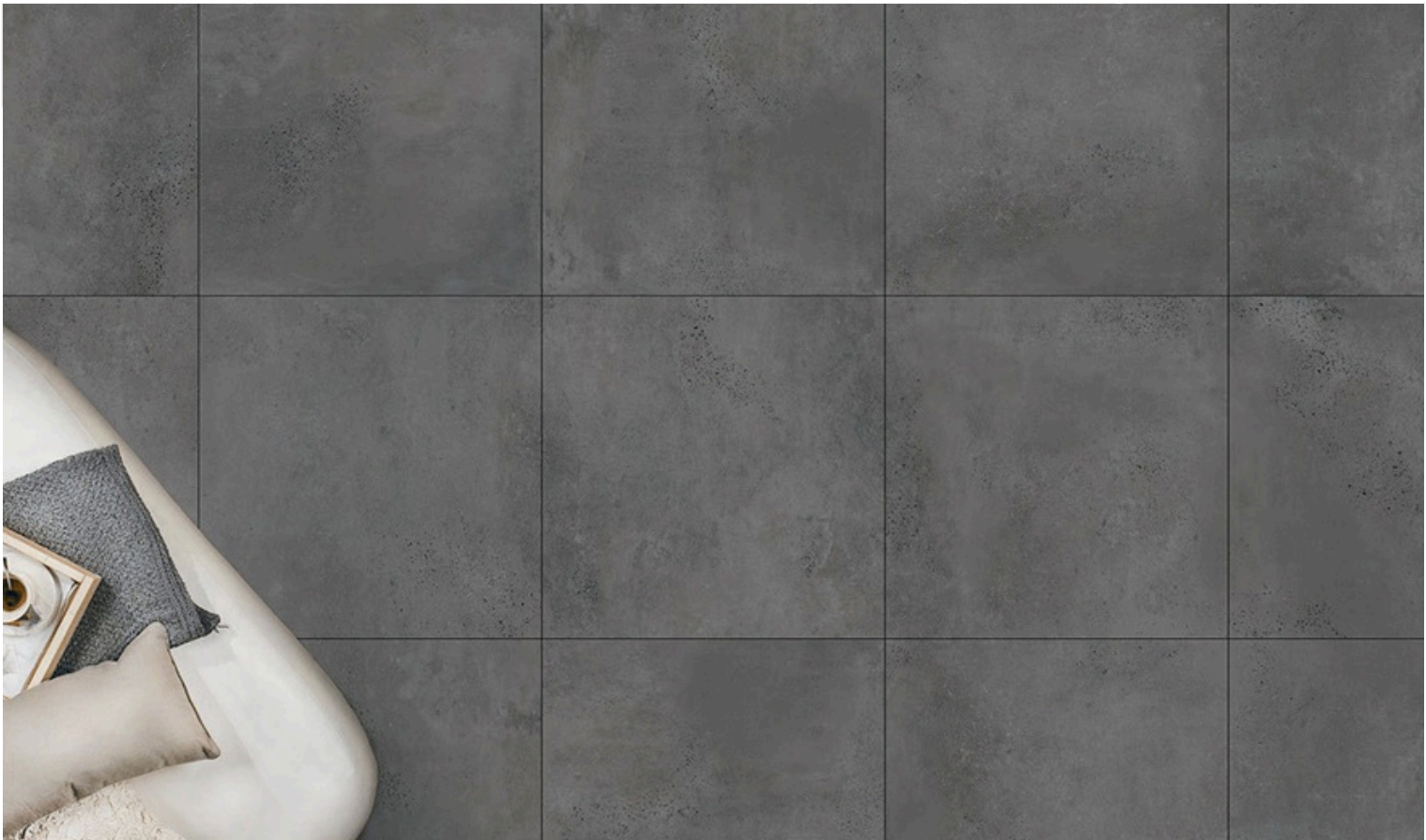
600 x 600mm
51565 (matt) P3
52363 (textured) P5

Technical Specification

	Properties	Test Method	Required Value	Value	Applies to
	Water absorption	ISO 10545-3	$\leq 0.5\%$	$\leq 3\%$	All finishes
	Determination of dimensions	ISO 10545-2	Length and width $\pm 0.5\%$ Thickness $\pm 5.00\%$ Edge straightness $\pm 0.5\%$ Surface flatness $\pm 5\%$	Length and width 0.5% Thickness 5.0% Edge straightness 0.6% Surface flatness 0.5%	All finishes
	Breaking strength	ISO 10545-4	≥ 1300 N	2184 N	All finishes
	Abrasion resistance	ISO 10545-6	Class 3 min	Complies with standards	All finishes
	Slip resistance (wet pendulum test)	Wet pendulum test	N/A	P2 – Matt 300 x 600, 450 x 450 and 600 x 600 P3 – Matt 300 x 300 P5 – Textured	Matt, textured
	Chemical resistance	ISO 10545-13	GB min.	Complies with standards	All finishes
	Stain resistance	ISO 10545-14	Class 3 min.	Complies with standards	All finishes
	Origin	N/A	N/A	Australia	Full range
	Shade variation	N/A	N/A	V2	Full range

Packing Information

Tile description		Quantityper box	Quantity per m2		Quantity per pallet	
Size (mm)	Texture	Pieces	Pieces	Weight	m2	boxes
300 x 300	Matt – Ash, Charcoal, White	22	11.11	14.05 kg	95.04	48
300 x 300	Matt – Grey	16	11.11	14.05 kg	92.16	64
300 x 600	Matt	8	5.56	20.00 kg	69.12	48
450 x 450	Matt Textured	7	4.93	16.74 kg	113.60	80
600 x 600	Matt Textured	4	2.78	19.97 kg	69.12	48



The data and information contained in these specification sheets are indicative only unless stated otherwise. As ColorTile cannot control the conditions under which these products are manufactured, the specifications supplied should be considered as suggested guidelines only and are subject to batch variation. The information contained in these specification sheets should not be considered a warranty, expressed or implied, including, but not limited to, a warranty of merchantability or fitness for a particular purpose. To the maximum extent permitted by law, ColorTile will not be responsible for damages of any nature resulting from the use or reliance upon the information contained in this data sheet. No express or implied warranties are given in respect of any specification provided herein other than those that cannot be excluded under the Australian Consumer Law.