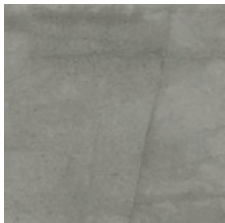


Kempsey

The Kempsey range is an Australian-made glazed tile series using the latest in digital printing to replicate the look of stone. Available in four colourways – Ash, Grey, White and Ivory – and in a 300 x 300mm, 300 x 600mm, 450 x 450mm and 600 x 600mm matt format as well as a 450 x 450mm and 600 x 600mm external finish, Kempsey offers complete flexibility for today's modern lifestyle.

KEMPSEY

COLOURS



Ash



Grey



White

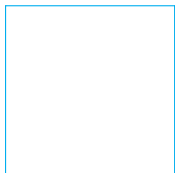


Ivory

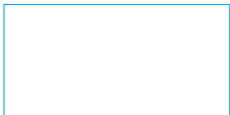
FORMATS



600 x 600mm



450 x 450mm



300 x 600mm

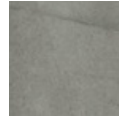


300 x 300mm

FINISH: **MATT** | CATEGORY: GLAZED FLOOR TILES | EDGE DETAIL: UNRECTIFIED | V RATING: V2
FINISH: **TEXTURED** | CATEGORY: GLAZED FLOOR TILES | EDGE DETAIL: UNRECTIFIED | V RATING: V2



Ash



300 x 300mm
52344 (matt) P3



450 x 450mm
52347 (matt) P3
52350 (textured) P5

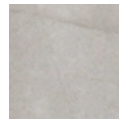


300 x 600mm
52353 (matt)

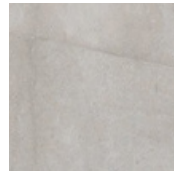


600 x 600mm
52356 (matt)P3
52359 (textured) P5

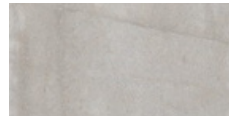
Grey



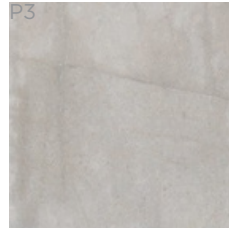
300 x 300mm
52343 (matt) P3



450 x 450mm
52346 (matt) P3
52349 (textured) P5

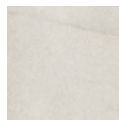
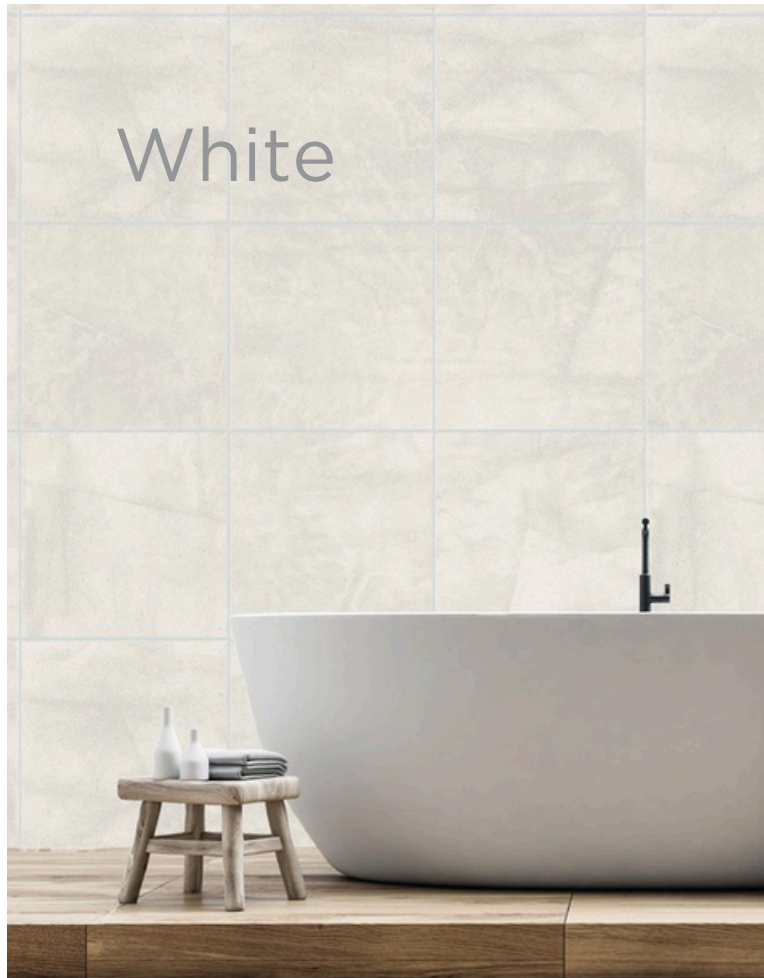


300 x 600mm
52352 (matt)
P3

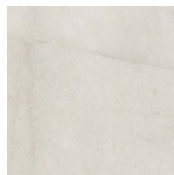


600 x 600mm
52355 (matt) P3
52358 (textured) P5

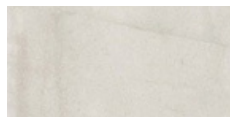
White



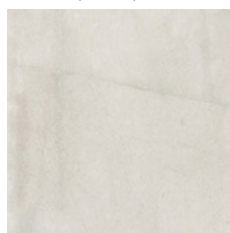
300 x 300mm
52342 (matt) P3



450 x 450mm
52345 (matt) P3
52348 (textured) P5

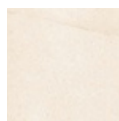
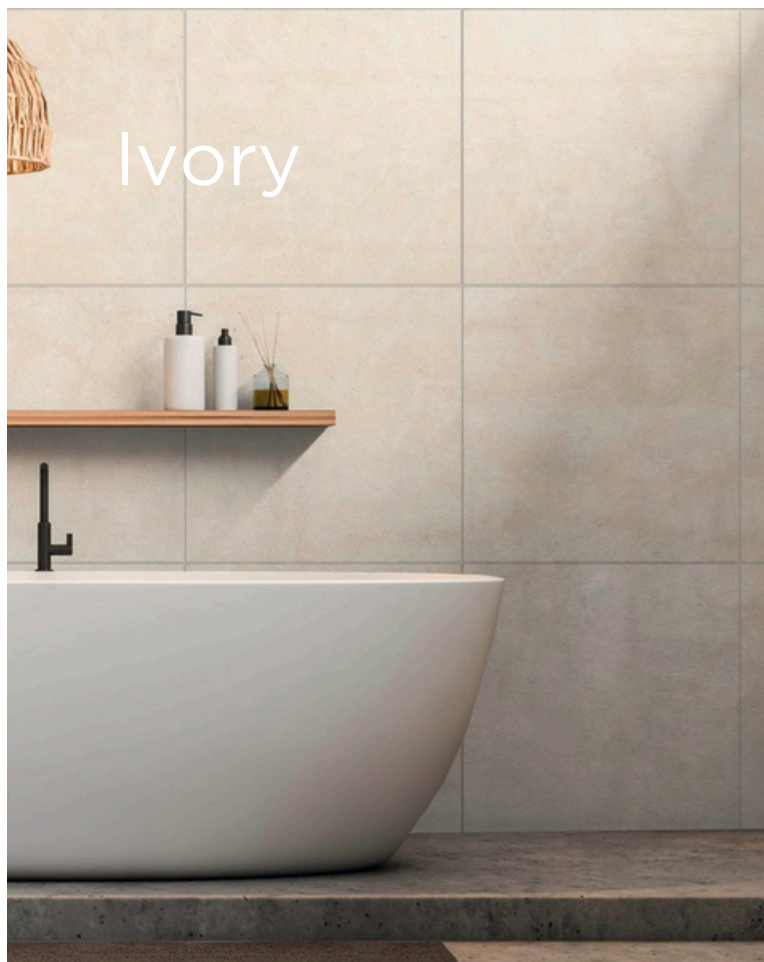


300 x 600mm
52351 (matt) P3

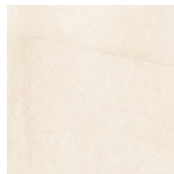


600 x 600mm
52354 (matt) P3
52357 (textured) P5

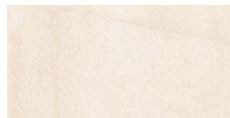
Ivory



300 x 300mm
53907 (matt) P3



450 x 450mm
53909 (matt)P3
53910 (textured) P5












300 x 600mm
53908 (matt) P3



600 x 600mm
53911 (matt) P3
53912 (textured) P5

Technical Specification

	Properties	Test Method	Required Value	Value	Applies to
	Water absorption	ISO 10545-3	$\leq 0.5\%$	$\leq 3\%$	All finishes
	Determination of dimensions	ISO 10545-2	Length and width $\pm 0.5\%$ Thickness $\pm 5.00\%$ Edge straightness $\pm 0.5\%$ Surface flatness $\pm 5\%$	Length and width 0.5% Thickness 5.0% Edge straightness 0.6% Surface flatness 0.5%	All finishes
	Breaking strength	ISO 10545-4	≥ 1300 N	2184 N	All finishes
	Abrasion resistance	ISO 10545-6	Class 3 min	Complies with standards	All finishes
	Slip resistance (wet pendulum test)	Wet pendulum test	N/A	P5 – Textured P3 – Matt	Matt, Textured
	Chemical resistance	ISO 10545-13	GB min.	Complies with standards	All finishes
	Stain resistance	ISO 10545-14	Class 3 min.	Complies with standards	All finishes
	Origin	N/A	N/A	Australia	Full range
	Shade variation	N/A	N/A	V2	Full range

Packing Information

Tile description		Quantityper box	Quantity per m2		Quantity per pallet	
Size (mm)	Texture	Pieces	Pieces	Weight	m2	boxes
300 x 300	Matt	22	11.11	14.05 kg	95.04	48
300 x 600	Matt	8	5.56	20.00 kg	69.12	48
450 x 450	Matt Textured	7	4.93	16.74 kg	113.60	80
600 x 600	Matt Textured	4	2.78	19.97 kg	69.12	48



The data and information contained in these specification sheets are indicative only unless stated otherwise. As ColorTile cannot control the conditions under which these products are manufactured, the specifications supplied should be considered as suggested guidelines only and are subject to batch variation. The information contained in these specification sheets should not be considered a warranty, expressed or implied, including, but not limited to, a warranty of merchantability or fitness for a particular purpose. To the maximum extent permitted by law, ColorTile will not be responsible for damages of any nature resulting from the use or reliance upon the information contained in this data sheet. No express or implied warranties are given in respect of any specification provided herein other than those that cannot be excluded under the Australian Consumer Law.