

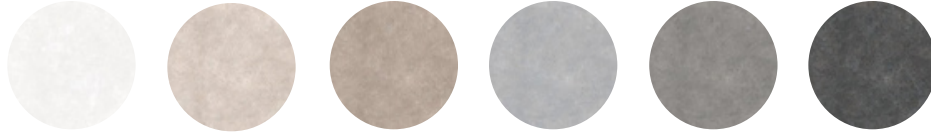
Renegade

The Renegade range is an Australian-made glazed tile series using the latest in digital technology. Designed to offer flexibility for both residential and commercial use, the range is suitable for wall and floor applications. Available in six colourways each with sizes of 300 x 300mm and 300 x 600mm in a matt finish as well as sizes of 450mm x 450mm and 600 x 600mm in both matt and textured finishes.



RENEGADE

COLOURS, FORMATS & FINISHES



Matt | P3

White

Beige

Latte

Grey

Ash

Black

600 x 600mm	•	•	•	•	•	
450 x 450mm	•	•	•	•	•	•
300 x 600mm	•	•	•	•	•	
300 x 300mm	•	•	•	•	•	•

Textured | P5

600 x 600mm	•	•	•	•	•	
450 x 450mm	•	•	•	•	•	•

FINISH: **MATT** | CATEGORY: GLAZED FLOOR TILES | EDGE DETAIL: UNRECTIFIED | V RATING: V2
 FINISH: **TEXTURED** | CATEGORY: GLAZED FLOOR TILES | EDGE DETAIL: UNRECTIFIED | V RATING: V2





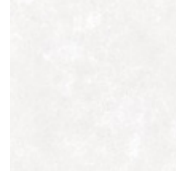
White



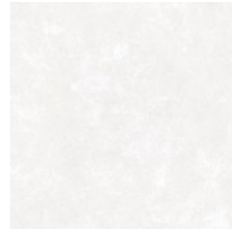
300 x 300mm
50565 (matt)



300 x 600mm
53834 (matt)



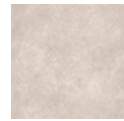
450 x 450mm
50571 (matt)
51709 (textured)



600 x 600mm
52917 (matt)
53846 (textured)



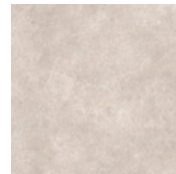
Beige



300 x 300mm
50567 (matt)



300 x 600mm
53835 (matt)



450 x 450mm
50574 (matt)
50946 (textured)

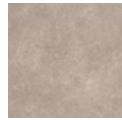


600 x 600mm
52919 (matt)
53847 (textured)

Latte



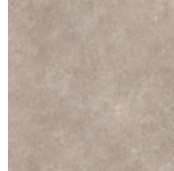
V2
P3 P5



300 x 300mm
50569 (matt)



300 x 600mm
53836 (matt)

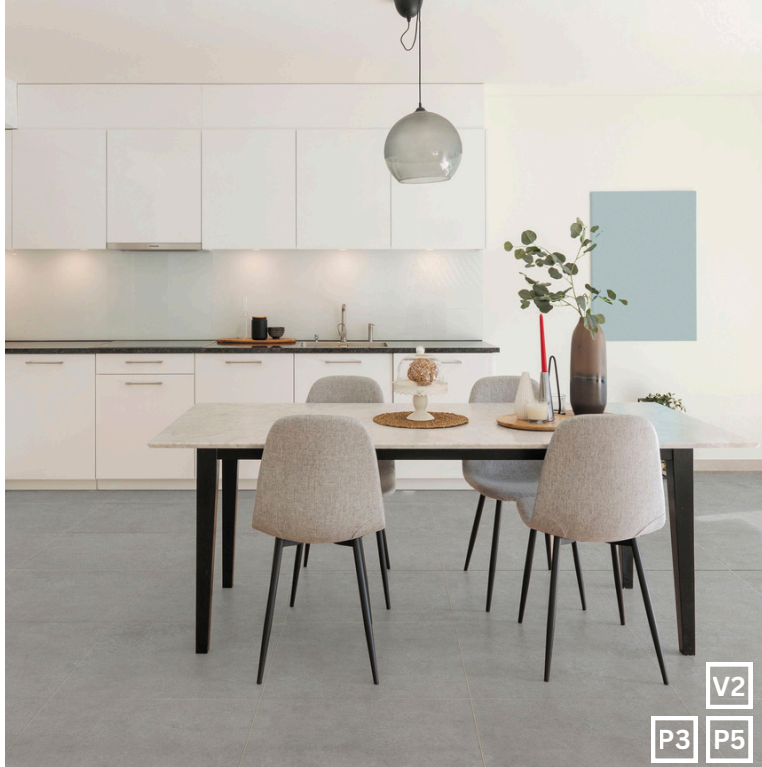


450 x 450mm
50577 (matt)
50578 (textured)

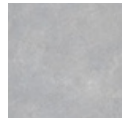


600 x 600mm
53888 (matt)
53848 (textured)

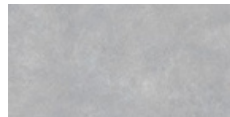
Grey



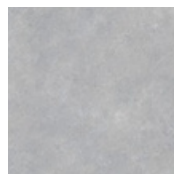
V2
P3 P5



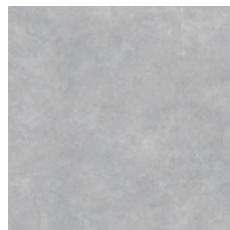
300 x 300mm
50566 (matt)



300 x 600mm
53837 (matt)

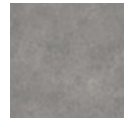


450 x 450mm
50572 (matt)
50573 (textured)

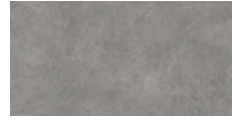


600 x 600mm
52918 (matt)
53849 (textured)

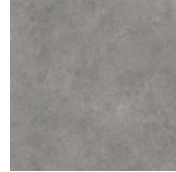
Ash



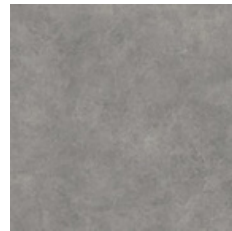
300 x 300mm
53543 (matt)



300 x 600mm
53838 (matt)

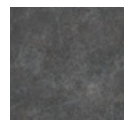
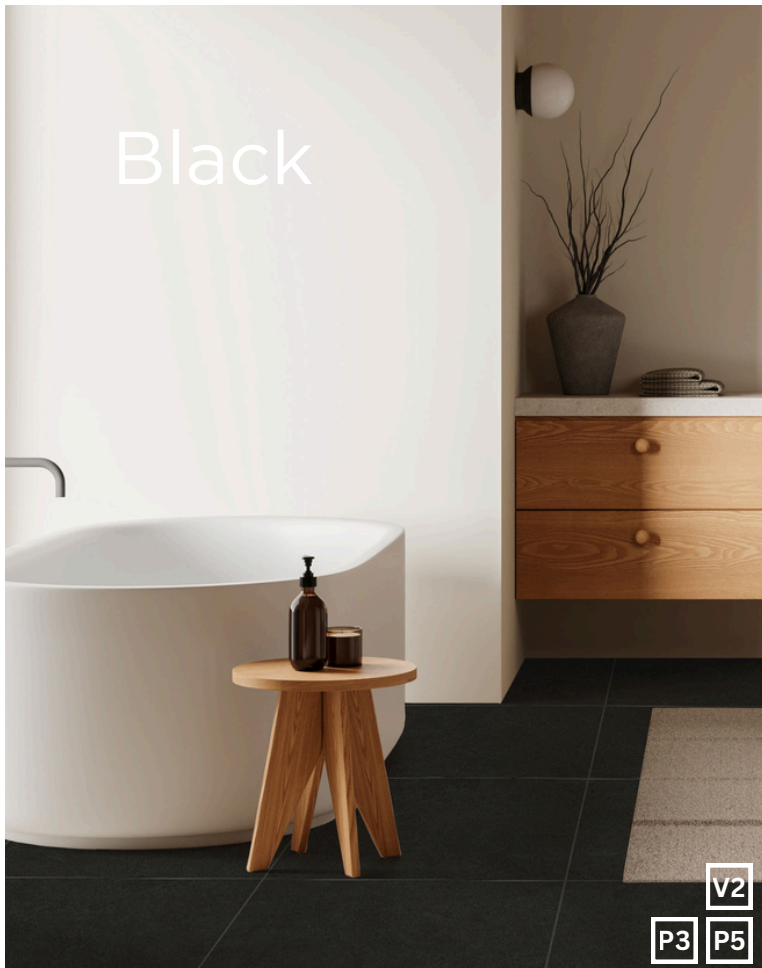


450 x 450mm
53544 (matt)
53545 (textured)

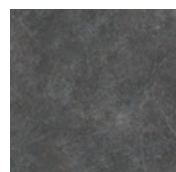


600 x 600mm
53546 (matt)
53845 (textured)

Black












300 x 300mm
50570 (matt)



450 x 450mm
50579 (matt)
50580 (textured)

Technical Specifications

Properties	Test Method	Required Value	Value	Applies to
 Water absorption	ISO 10545-3	$\leq 0.5\%$	$\leq 3\%$	All finishes
 Determination of dimensions	ISO 10545-2	Length and width $\pm 0.5\%$ Thickness $\pm 5.00\%$ Edge straightness $\pm 0.5\%$ Surface flatness $\pm 5\%$	Length and width 0.5% Thickness 5.0% Edge straightness 0.6% Surface flatness 0.5%	All finishes
 Breaking strength	ISO 10545-4	≥ 12 N/mm	30 N/mm	All finishes
 Abrasion resistance	ISO 10545-6	Class 3 min	Complies with standards	All finishes
 Slip resistance (wet pendulum test)	Wet pendulum test	N/A	P3 – Matt P5 – Textured	Matt, Textured
 Chemical resistance	ISO 10545-13	GB min.	Complies with standards	All finishes
 Stain resistance	ISO 10545-14	Class 3 min.	Complies with standards	All finishes
 Origin	N/A	N/A	Australia	Full range
 Shade variation	N/A	N/A	V2	Full range



Packing Information

Tile Description		Quantity per Box	Quantity per m2		Quantity per Pallet	
Size (mm)	Finish	Pieces	Pieces	Weight	m2	Boxes
300 x 300	Matt	22	11.11	14.05kg	95.04	48
300 x 600	Matt	8	5.56	20.00kg	69.12	48
450 x 450	Matt Textured	7	4.93	16.74kg	113.60	80
600 x 600	Matt Textured	4	2.78	19.97kg	69.12	48



The data and information contained in these specification sheets are indicative only unless stated otherwise. As ColorTile cannot control the conditions under which these products are manufactured, the specifications supplied should be considered as suggested guidelines only and are subject to batch variation. The information contained in these specification sheets should not be considered a warranty, expressed or implied, including, but not limited to, a warranty of merchantability or fitness for a particular purpose. To the maximum extent permitted by law, ColorTile will not be responsible for damages of any nature resulting from the use or reliance upon the information contained in this data sheet. No express or implied warranties are given in respect of any specification provided herein other than those that cannot be excluded under the Australian Consumer Law.