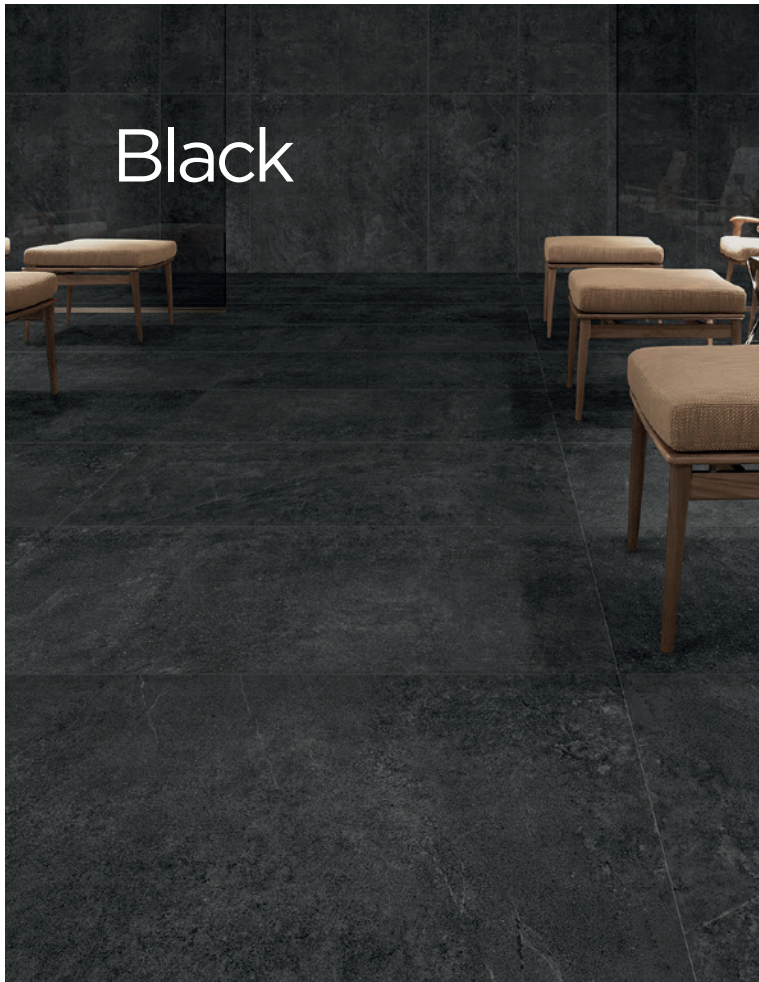


# Cemento Pietra

The Cemento Pietra range is reminiscent of the subtle variation of concrete, and fused with the veining of Pietra marble. This sleek and timeless range comes in four colourways of Black, Grey, Tan and White, meeting the needs of every look or style. The Cemento Pietra range also comes in a large array of sizes from 75 x 300mm, 300 x 300mm, 300 x 600mm and 600 x 600mm, making this a very versatile range for every need.

# Black



75 x 300mm  
53729 (in/out) P4



300 x 300mm  
53726 (in/out) P4



300 x 600mm  
53727 (in/out) P4



600 x 600mm  
53728 (in/out) P4

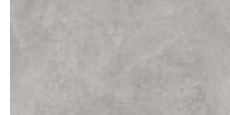
# Grey



75 x 300mm  
53734 (in/out) P4



300 x 300mm  
53731 (in/out) P4



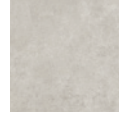
300 x 600mm  
53732 (in/out) P4



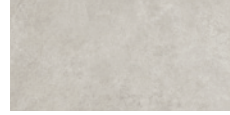
600 x 600mm  
53733 (in/out) P4



**75 x 300mm**  
53739 (in/out) P4



**300 x 300mm**  
53736 (in/out) P4



**300 x 600mm**  
53737 (in/out) P4



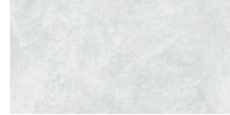
**600 x 600mm**  
53738 (in/out) P4



**75 x 300mm**  
53744 (in/out) P4



**300 x 300mm**  
53741 (in/out) P4



**300 x 600mm**  
53742 (in/out) P4



**600 x 600mm**  
53743 (in/out) P4

# Technical Specification

Properties	Test Method	Required Value	Value	Applies to
 Water absorption	EN ISO 10545-3	≤ 0.5%	≤ 0.5%	Full range
 Determination of dimensions	EN ISO 10545-2	Length and width ± 0.6% Thickness ± 5.00% Transmutation ± 0.5%	Length and width ± 0.1% Thickness ± 3% Transmutation ± 0.2%	Full range
 Breaking strength	EN ISO 10545-4	≥ 1300 N	≥ 1300 N	Full range
 Modulus of rupture	EN ISO 10545-4	≥ 35 N/mm <sup>2</sup>	≥ 35 N/mm <sup>2</sup>	Full range
 Abrasion resistance	EN ISO 10545-7	≤ 205mm <sup>2</sup>	≤ 160mm <sup>2</sup>	Full range
 Slip resistance (wet pendulum test)	AS 4586-2013/ AMDT1-2017	N/A	P4	Full range
 Chemical resistance	EN ISO 10545-13	Min. GB	Pass	Full range
 Stain resistance	ISO 10545-14	Min class 3	Pass	Full range
 Origin	N/A	N/A	China	Full range
 Shade variation	N/A	N/A	V3	Full range

# Packing Information

Tile description		Quantity per box	Quantity per m2		Quantity per pallet	
Size (mm)	Texture	Pieces	Pieces	Weight	m2	boxes
75 x 300	In/out	46	44.44	23.20 kg	49.68	48
300 x 300	In/out	11	11.11	20.20 kg	60.48	56
300 x 600	In/out	8	5.56	31.00 kg	57.60	40
600 x 600	In/out	4	2.78	20.83 kg	57.60	40



*The data and information contained in these specification sheets are indicative only unless stated otherwise.  
 As ColorTile cannot control the conditions under which these products are manufactured, the specifications supplied should be considered as suggested guidelines only and are subject to batch variation.  
 The information contained in these specification sheets should not be considered a warranty, expressed or implied, including, but not limited to, a warranty of merchantability or fitness for a particular purpose.  
 To the maximum extent permitted by law, ColorTile will not be responsible for damages of any nature resulting from the use or reliance upon the information contained in this data sheet.  
 No express or implied warranties are given in respect of any specification provided herein other than those that cannot be excluded under the Australian Consumer Law.*