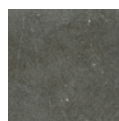


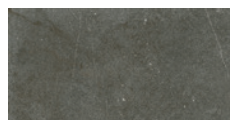
Courtyard

The Courtyard range is your all-in-one solution for residential and commercial flooring needs. This innovative product with its diamond surface technology combines aesthetic design with maximum functionality, making it suitable for any number of internal or external walkways and carports. Available in three textured colourways – anthracite, sterling and taupe – and in two formats 300 x 300mm and 300 x 600mm, Courtyard's versatility is ideal for high traffic areas and uncompromising outdoor applications.

Anthracite



300 x 300mm
53725 (textured) P3



300 x 600mm
53722 (textured) P3

Sterling



300 x 300mm
53723 (textured) P3



300 x 600mm
53720 (textured) P3

Taupe



300 x 300mm
53724 (textured) P3



300 x 600mm
53721 (textured) P3



Technical Specification

Properties	Test Method	Required Value	Value	Applies to
 Water absorption	EN ISO 10545-3	≤ 0.5%	≤ 0.23%	Full range
 Determination of dimensions	EN ISO 10545-2	Length and width ± 0.6% Thickness ± 5.00% Transmutation ± 0.5%	Length and width + 0.45% Thickness - 1.5% Transmutation ± 0.89%	Full range
 Breaking strength	EN ISO 10545-4	≥ 1300 N	≥ 1767 N	Full range
 Modulus of rupture	EN ISO 10545-4	≥ 35 N/mm	≥ 42 N/mm	Full range
 Abrasion resistance	EN ISO 10545-7	N/A	Class 4	Full range
 Slip resistance (wet pendulum test)	AS 4586	N/A	P3	Full range
 Chemical resistance	EN ISO 10545-13	Min. GB	GA, GLA, GHA	Full range
 Stain resistance	ISO 10545-14	Min class 3	Class 5	Full range
 Origin	N/A	N/A	Malaysia	Full range
 Shade variation	N/A	N/A	V3	Full range

Packing Information

Tile description		Quantity per box	Quantity per m2		Quantity per pallet	
Size (mm)	Texture	Pieces	Pieces	Weight	m2	boxes
300 x 300	Textured	15	11.11	24.60 kg	86.40	64
300 x 600	Textured	8	5.56	32.00 kg	57.60	40



The data and information contained in these specification sheets are indicative only unless stated otherwise.
 As ColorTile cannot control the conditions under which these products are manufactured, the specifications supplied should be considered as suggested guidelines only and are subject to batch variation.
 The information contained in these specification sheets should not be considered a warranty, expressed or implied, including, but not limited to, a warranty of merchantability or fitness for a particular purpose.
 To the maximum extent permitted by law, ColorTile will not be responsible for damages of any nature resulting from the use or reliance upon the information contained in this data sheet.
 No express or implied warranties are given in respect of any specification provided herein other than those that cannot be excluded under the Australian Consumer Law.