

# Bellingen

The Bellingen range offers the look of concrete and easy living benefits of a glazed floor tile. Bellingen has the flexibility to be used in both residential and commercial applications, and is suitable for both wall and floor applications.

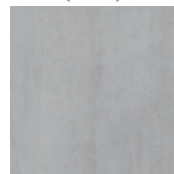
The range is available in four colourways – ash, charcoal, white and woodstone – and a range of sizes 600 x 600mm, 450 x 450mm, 300 x 600mm, and 300 x 300mm. With such a variety of sizes and colours, Bellingen offers the complete solution for any project.



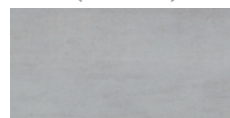
# Ash



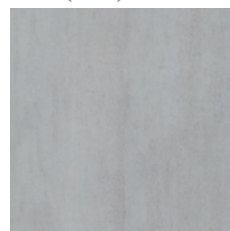
300 x 300mm  
51157 (matt) P2



450 x 450mm  
51594 (matt) P2  
51597 (textured) P5



300 x 600mm  
51162 (matt) P2

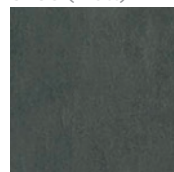


600 x 600mm  
51167 (matt) P2

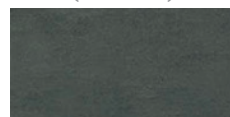
# Charcoal



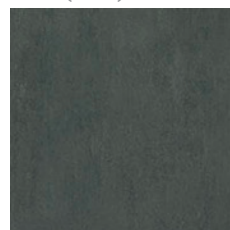
300 x 300mm  
51160 (matt) P2



450 x 450mm  
51596 (matt) P2  
51599 (textured) P5



300 x 600mm  
51165 (matt) P2



600 x 600mm  
51170 (matt) P2



White



300 x 300mm  
51156 (matt) P2



450 x 450mm  
51593 (matt) P2  
51707 (textured) P5



300 x 600mm  
51161 (matt) P2



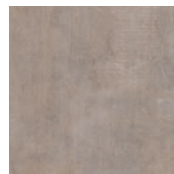
600 x 600mm  
51166 (matt) P2



Woodstone



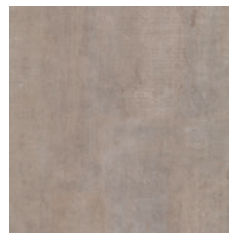
300 x 300mm  
51158 (matt) P2



450 x 450mm  
51595 (matt) P2  
51598 (textured) P5












300 x 600mm  
51163 (matt) P2



600 x 600mm  
51168 (matt) P2

# Technical Specification

	Properties	Test Method	Required Value	Value	Applies to
	Water absorption	ISO 10545-3	$\leq 0.5\%$	$\leq 3\%$	All finishes
	Determination of dimensions	ISO 10545-2	Length and width $\pm 0.5\%$ Thickness $\pm 5.00\%$ Edge straightness $\pm 0.5\%$ Surface flatness $\pm 5\%$	Length and width 0.5% Thickness 5.0% Edge straightness 0.6% Surface flatness 0.5%	All finishes
	Breaking strength	ISO 10545-4	$\geq 1300$ N	2184 N	All finishes
	Abrasion resistance	ISO 10545-6	Class 3 min.	Complies with standards	All finishes
	Slip resistance (wet pendulum test)	Wet pendulum test	N/A	P2 P5	Matt Textured
	Chemical resistance	ISO 10545-13	GB min.	Complies with standards	All finishes
	Stain resistance	ISO 10545-14	Class 3 min.	Complies with standards	All finishes
	Origin	N/A	N/A	Australia	Full range
	Shade variation	N/A	N/A	V2	Full range



# Packing Information

Tile description		Quantity per box	Quantity per m2		Quantity per pallet	
Size (mm)	Texture	Pieces	Pieces	Weight	m2	boxes
300 x 300	Matt - Charcoal, White, Woodstone	16	11.11	14.05 kg	92.16	64
300 x 300	Matt - Ash	16	11.11	14.05 kg	92.16	64
300 x 600	Matt	8	5.56	20.00 kg	69.12	48
450 x 450	Matt Textured	7	4.93	16.74 kg	113.60	80
600 x 600	Matt - Ash, Charcoal, White	4	2.78	19.97 kg	69.12	48
600 x 600	Matt - Woodstone	5	2.78	19.97 kg	64.80	36



The data and information contained in these specification sheets are indicative only unless stated otherwise.  
As ColorTile cannot control the conditions under which these products are manufactured, the specifications supplied should be considered as suggested guidelines only and are subject to batch variation.  
The information contained in these specification sheets should not be considered a warranty, expressed or implied, including, but not limited to, a warranty of merchantability or fitness for a particular purpose.  
To the maximum extent permitted by law, ColorTile will not be responsible for damages of any nature resulting from the use or reliance upon the information contained in this data sheet.  
No express or implied warranties are given in respect of any specification provided herein other than those that cannot be excluded under the Australian Consumer Law.