

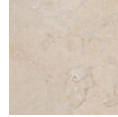
# Lagos

Lagos is a collection of Italian glazed porcelain tiles replicating the beauty of limestone without the need for sealing. Lagos offers superior performance and is suitable for internal and external floors, including wet areas. This classic series is available in two colourways - Ivory and Light Grey, and three different sizes of 300 x 300mm, 300 x 600mm and 450 x 900mm as well as a 450 x 900mm external finish.





Ivory



300 x 300mm  
52425 (matt) P2



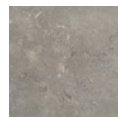
300 x 600mm  
52430 (matt) P2



450 x 900mm  
52435 (matt) P2  
52440 (textured) P5



Light Grey



300 x 300mm  
52427 (matt) P2




300 x 600mm  
52432 (matt) P2



450 x 900mm  
52437 (matt) P2  
52442 (textured) P5

# Technical Specification

Properties	Test Method	Required Value	Value	Applies to
 Water absorption	ISO 10545-3	$\leq 0.5\%$	0.10%	Full range
 Determination of dimensions	ISO 10545-2	Length and width 0.6% Thickness 0.5% Edge straightness 0.5% Surface flatness 0.5%	Complies with standards	Full range
 Breaking strength	ISO 10545-4	$\geq 1300$ N	Complies with standards	Full range
 Modulus of rupture	ISO 10545-4	$\geq 35$ N/mm	45.6 N/mm	Full range
 Abrasion resistance	ISO 10545-6	Max 175mm <sup>3</sup>	Complies with standards	Full range
 Slip resistance (oil wet ramp test)	DIN 51130	N/A	R10 - Matt R11 - External	Matt, External
 Slip resistance (wet pendulum test)	Wet pendulum test	N/A	P5 - Textured P2 - Natural	Natural, Textured
 Chemical resistance	ISO 10545-13	Minimum UB	Complies with standards	Full range
 Origin	N/A	N/A	Italy	Full range
 Shade variation	N/A	N/A	V3	Full range



# Packing Information

Tile description		Quantity per box	Quantity per m2		Quantity per pallet	
Size (mm)	Texture	Pieces	Pieces	Weight	m2	boxes
300 x 300	Matt	11	11.11	23.73 kg	47.52	48
300 x 600	Matt	6	5.56	20.13 kg	43.20	40
450 x 900	Matt Textured	3	2.47	24.22 kg	38.88	32



*The data and information contained in these specification sheets are indicative only unless stated otherwise. As ColorTile cannot control the conditions under which these products are manufactured, the specifications supplied should be considered as suggested guidelines only and are subject to batch variation. The information contained in these specification sheets should not be considered a warranty, expressed or implied, including, but not limited to, a warranty of merchantability or fitness for a particular purpose. To the maximum extent permitted by law, ColorTile will not be responsible for damages of any nature resulting from the use or reliance upon the information contained in this data sheet. No express or implied warranties are given in respect of any specification provided herein other than those that cannot be excluded under the Australian Consumer Law.*