

ColorTile Highlights

Outdoor

Autumn 2024

A modern outdoor space featuring a wooden wall, a green living wall, a yellow motorcycle, and a swimming pool with a mosaic tile bottom. The scene is set under a wooden pergola structure. The ground is paved with light-colored stone tiles. A small potted tree is visible on the left. The overall aesthetic is clean, natural, and stylish.

Where style comes to life™



The concrete look

Cemento Pietra	5
Kierrastone	7
Renegade	9

The terrazzo look

Isla	11
Venistone	13

The marble look

Invictus	15
Tundra	17

The stone look

Reverso	19
Touchstone	21
Norcia	23
Bristol	27
Sella	29
Filita	31
Esla	33
Borgogna White	35
Tuffeau	37
Mas de Provence	39
Aquitaine	41
Lagos	43
Lusso	45
Riverstone	47
Kempsey	49
Albany	51
Massive Stone	53
Mars	55

The timber look

Treverkmore	57
What is shade variation?	61



Outdoor



Borgogna White & Filita

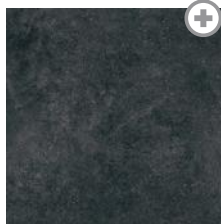


Cemento Pietra

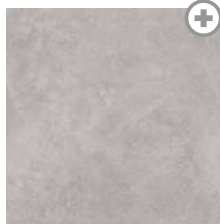
4 colourways, 2 sizes, V2

Features: glazed porcelain tile; classic style; concrete and stone look; rectified edge (R/T)

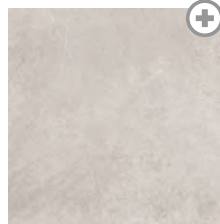
Suggested uses: external and internal floors; wet areas; decking; pool areas



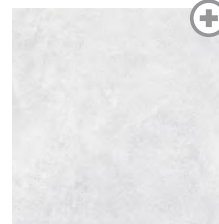
Black R/T
600 x 600mm
53728 (in/out)



Grey R/T
600 x 600mm
53733 (in/out)



Tan R/T
600 x 600mm
53738 (in/out)



White R/T
600 x 600mm
53743 (in/out)



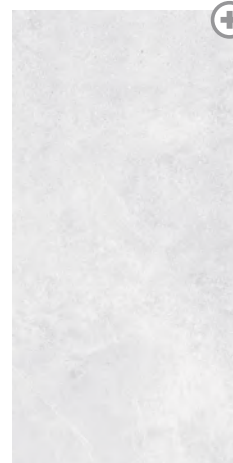
600 x 1200mm
53730 (in/out)



600 x 1200mm
53735 (in/out)



Tan R/T
600 x 1200mm
53740 (in/out)



White R/T
600 x 1200mm
53745 (in/out)

Made in Australia



Kierrastone

4 colourways, 2 sizes, V2

Features: wall and floor tile; cushion edge; external finish

Suggested uses: internal and external areas, wet areas; different surface finishes allow for seamless lines between living rooms and outdoors



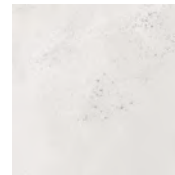
Ash
450 x 450mm
51560 (textured) P5



Charcoal
450 x 450mm
51561 (textured) P5



Grey
450 x 450mm
51559 (textured) P5



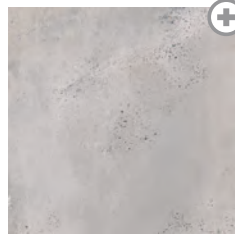
White
450 x 450mm
51708 (textured) P5



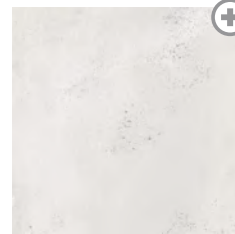
Ash
600 x 600mm
52362 (textured) P5



Charcoal
600 x 600mm
52365 (textured) P5



Grey
600 x 600mm
52364 (textured) P5



White
600 x 600mm
52363 (textured) P5

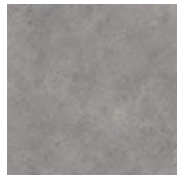
Made in Australia

Renegade

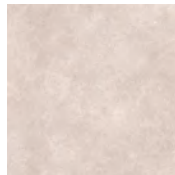
6 colourways, 1 size, V2

Features: wall and floor tile; cushion edge, external finish

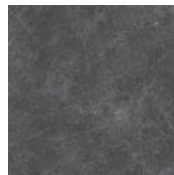
Suggested uses: internal and external areas, wet areas; different surface finishes allow for seamless lines between living rooms and outdoors



Ash
450 x 450mm
53545 (textured) P5



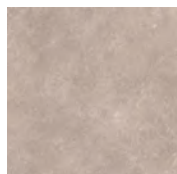
Beige
450 x 450mm
50946 (textured) P5



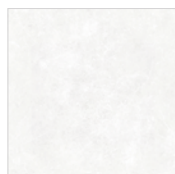
Black
450 x 450mm
50580 (textured) P5



Grey
450 x 450mm
50573 (textured) P5



Latte
450 x 450mm
50578 (textured) P5



White
450 x 450mm
51709 (textured) P5

Made in Australia



Isla

4 colourways, 2 sizes, V2

Features: wall and floor tile; cushion edge, external finish

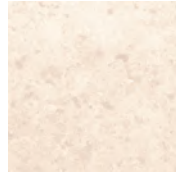
Suggested uses: internal and external areas, wet areas; different surface finishes allow for seamless lines between living rooms and outdoors



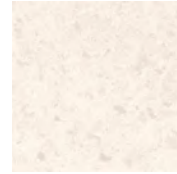
Beige
450 x 450mm
54111 (textured) P5



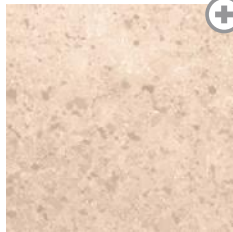
Grey
450 x 450mm
52764 (textured) P5



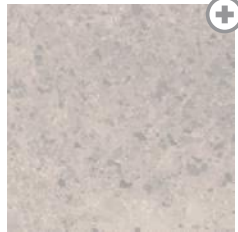
Ivory
450 x 450mm
54029 (textured) P5



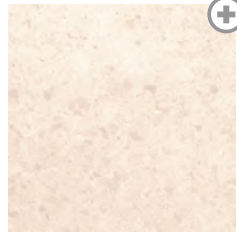
White
450 x 450mm
52763 (textured) P5



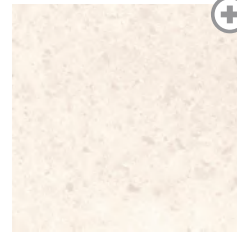
Beige
600 x 600mm
54113 textured P5



Grey
600 x 600mm
54071 textured P5



Ivory
600 x 600mm
54070 textured P5



White
600 x 600mm
54073 textured P5



Venistone

5 colourways, 4 sizes, V2

Features: glazed porcelain wall and floor tile; rectified edge (R/T)

Suggested uses: internal and external floors; wet areas; heavy traffic areas



Beige R/T
300 x 300mm
(48 faces)
53995 (in/out) P4



Charcoal R/T
300 x 300mm
(48 faces)
53998 (in/out) P4



Dark Grey R/T
300 x 300mm
(48 faces)
53997 (in/out) P4



Light Grey R/T
300 x 300mm
(48 faces)
53996 (in/out) P4



White R/T
300 x 300mm
(48 faces)
53994 (in/out) P4



Beige R/T
300 x 600mm
(24 faces)
53990 (in/out) P4



Charcoal R/T
300 x 600mm
(24 faces)
53993 (in/out) P4



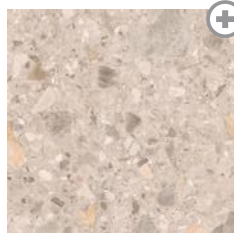
Dark Grey R/T
300 x 600mm
(24 faces)
53992 (in/out) P4



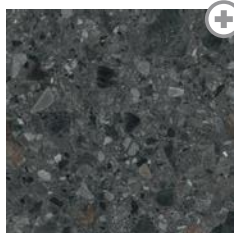
Light Grey R/T
300 x 600mm
(24 faces)
53991 (in/out) P4



White R/T
300 x 600mm
(24 faces)
53989 (in/out) P4



Beige R/T
600 x 600mm
(12 faces)
53985 (in/out) P4



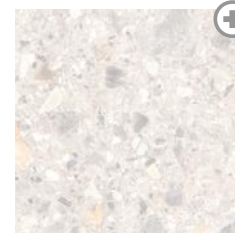
Charcoal R/T
600 x 600mm
(12 faces)
53988 (in/out) P4



Dark Grey R/T
600 x 600mm
(12 faces)
53987 (in/out) P4



Light Grey R/T
600 x 600mm
(12 faces)
53986 (in/out) P4



White R/T
600 x 600mm
(12 faces)
53984 (in/out) P4



Beige R/T
600 x 1200mm
(6 faces)
53980 (in/out) P4



Charcoal R/T
600 x 1200mm
(6 faces)
53983 (in/out) P4



Dark Grey R/T
600 x 1200mm
(6 faces)
53982 (in/out) P4



Light Grey R/T
600 x 1200mm
(6 faces)
53981 (in/out) P4



White R/T
600 x 1200mm
(6 faces)
53979 (in/out) P4

Made in Italy



Invictus

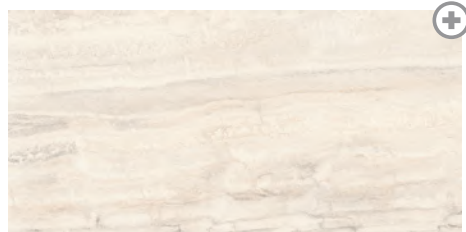
4 colourways, 1 size, V2

Features: glazed porcelain wall and floor tile; rectified edge (R/T)

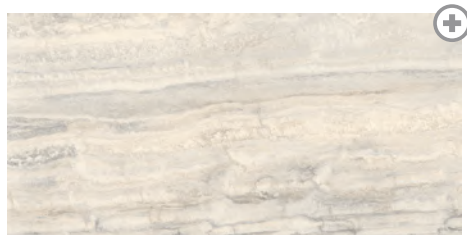
Suggested uses: internal floors and walls; feature areas; wet areas



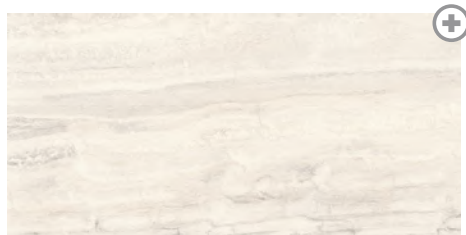
Beige R/T
600 x 1200mm
53939 (textured) P5



Ivory R/T
600 x 1200mm
53943 (textured) P5



Pearl R/T
600 x 1200mm
53972 (textured) P5



White R/T
600 x 1200mm
53947 (textured) P5

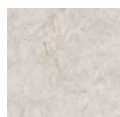


Tundra

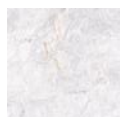
3 colourways, 3 sizes, V2

Features: glazed porcelain wall and floor tile; rectified edge (R/T)

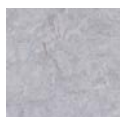
Suggested uses: internal floors and walls; feature areas; wet areas



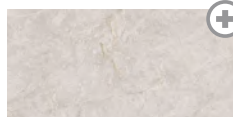
Beige R/T
300 x 300mm
53178 (in/out) P4



Bianco R/T
300 x 300mm
53183 (in/out) P4



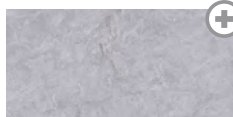
Grigio R/T
300 x 300mm
53185 (in/out) P4



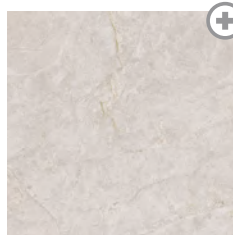
Beige R/T
600 x 300mm
53182 (in/out) P4



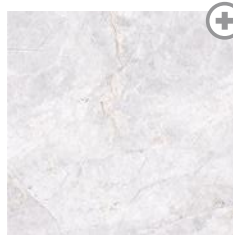
Bianco R/T
600 x 300mm
53179 (in/out) P4



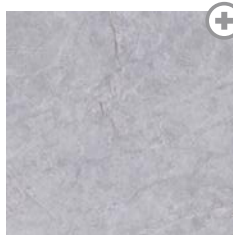
Grigio R/T
600 x 300mm
53181 (in/out) P4



Beige R/T
600 x 600mm
53178 (in/out) P4



Bianco R/T
600 x 600mm
53175 (in/out) P4



Grigio R/T
600 x 600mm
53177 (in/out) P4

Made in Italy



Reverso

5 colourways, 1 size, V3

Features: glazed porcelain wall and floor tile; rectified edge (R/T)

Suggested uses: internal floors and walls; feature areas; wet areas



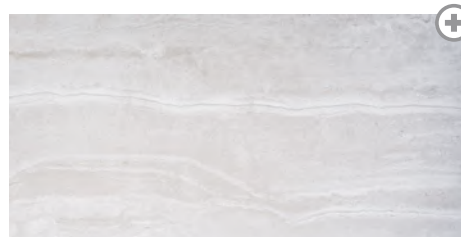
Avorio R/T
600 x 1200mm
53963 (textured) P5



Beige R/T
600 x 1200mm
53964 (textured) P5



Grigio R/T
600 x 1200mm
53966 (textured) P5



Silver R/T
600 x 1200mm
53969 (textured) P5



White R/T
600 x 1200mm
53967 (textured) P5

Made in Italy



Touchstone

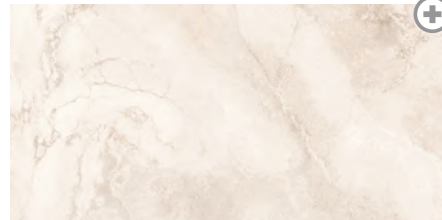
3 colourways, 1 size, V3

Features: glazed porcelain wall and floor tile; rectified edge (R/T)

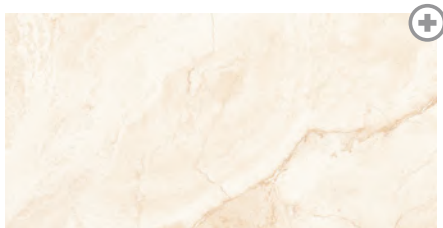
Suggested uses: internal floors and walls; feature areas; wet areas



Gold R/T
600 x 1200mm
53777 (external outdoor)



Grey R/T
600 x 1200mm
53778 (external outdoor)



White R/T
600 x 1200mm
53776 (external outdoor)



Norcia

4 colourways, 6 sizes, V3

Features: glazed porcelain tile; classic style; concrete and stone look; rectified edge (R/T)

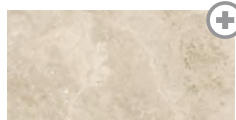
Suggested uses: external and internal floors; wet areas; decking; pool areas



Beige R/T
75 x 300mm (192 faces)
53751 (in/out)



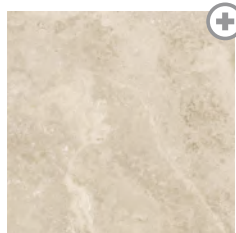
Beige
300 x 300mm mosaic
53748 (in/out)



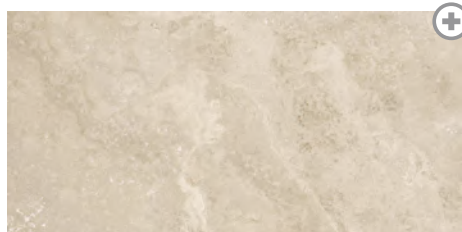
Beige R/T
300 x 600mm
(48 faces)
53705 (in/out)



Beige R/T
398 x 600mm Coping (24 faces)
53708 (in/out)



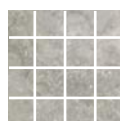
Beige R/T
600 x 600mm (24 faces)
53706 (in/out)
53709 (in/out 2cm thick)



Beige R/T
600 x 1200mm (12 faces)
53707 (in/out)



Grey R/T
75 x 300mm (192 faces)
53931 (in/out) P4



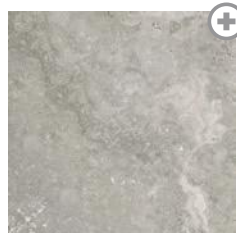
Grey
300 x 300mm mosaic
53930 (in/out) P4



Grey R/T
300 x 600mm
(48 faces)
53925 (in/out) P4



Grey R/T
398 x 600mm Coping (24 faces)
53926 (textured) P5



Grey R/T
600 x 600mm (24 faces)
53927 (in/out) P4
53928 (textured 2cm thick) P5



Grey R/T
600 x 1200mm (12 faces)
53929 (in/out) P4

Norcia (continued)



Light R/T
75 x 300mm (192 faces)
53750 (in/out)



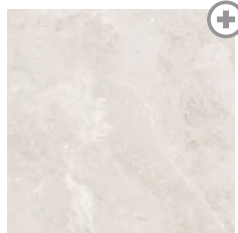
Light
300 x 300mm mosaic
53747 (in/out)



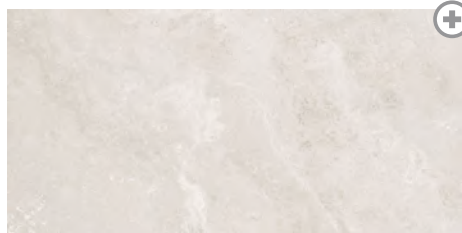
Light R/T
300 x 600mm
(48 faces)
53700 (in/out)



Light R/T
398 x 600mm Coping (24 faces)
53703 (in/out)



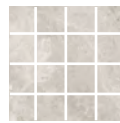
Light R/T
600 x 600mm (24 faces)
53701 (in/out)
53704 (in/out 2cm thick)



Light R/T
600 x 1200mm (12 faces)
53702 (in/out)



Silver R/T
75 x 300mm (192 faces)
53749 (in/out)



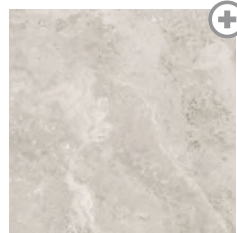
Silver
300 x 300mm mosaic
53746 (in/out)



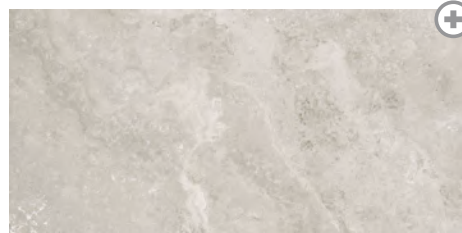
Silver R/T
300 x 600mm
(48 faces)
53710 (in/out)



Silver R/T
398 x 600mm Coping (24 faces)
53713 (in/out)



Silver R/T
600 x 600mm (24 faces)
53711 (in/out)
53714 (in/out 2cm thick)



Silver R/T
600 x 1200mm (12 faces)
53712 (in/out)





Bristol

4 colourways, 1 size, V1

Features: glazed wall and floor tile; cushioned edge

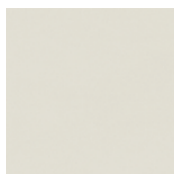
Suggested uses: internal walls and floors



Beige
450 x 450mm
53826 (textured)



Cement
450 x 450mm
53827 (textured)



Cream
450 x 450mm
53828 (textured)



Grey
450 x 450mm
53829 (textured)

Made in Spain



Sella

3 colourway, 1 size, V3

Features: glazed porcelain structured wall tile; contemporary style; stack-stone alternative

Suggested uses: internal and external walls; feature walls; planter boxes; indoor/outdoor and driveway



Grey
440 x 660mm
53639 (matt) P5



Natural
440 x 660mm
53640 (matt) P5



White
440 x 660mm
53638 (matt) P5

Made in Spain



Filita

1 colourway, 2 sizes, V4

Features: glazed porcelain structured wall tile; contemporary style; stack-stone alternative

Suggested uses: internal and external walls; feature walls; planter boxes; indoor/outdoor and driveway



Cobblestone
440 x 660mm
53643 (matt) P5



Flagstone
440 x 660mm
53644 (matt) P5

Made in Spain



Esla

1 colourway, 2 sizes, V2

Features: glazed porcelain structured wall tile; contemporary style; stack-stone alternative

Suggested uses: internal and external walls; feature walls; planter boxes; indoor/outdoor and driveway



Cobblestone
440 x 660mm
53641 (matt) P5



Flagstone
440 x 660mm
53642 (matt) P5

Made in Spain



Borgogna White

2 colourway, 3 sizes, V2

Features: glazed porcelain structured wall tile; contemporary style; stack-stone alternative

Suggested uses: internal and external walls; feature walls; planter boxes; indoor/outdoor and driveway



Cobblestone
440 x 660mm
53647 (matt) P5



Flagstone
440 x 660mm
53648 (matt) P5

Made in Italy



Tuffeau

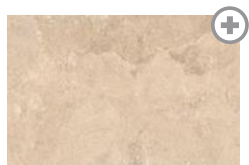
3 colourways, 2 sizes, V4

Features: glazed porcelain wall and floor tile; timeless style; additional French Pattern look

Suggested uses: internal and external floors; wet areas; heavy traffic areas; pool surrounds



Bianco
408 x 614mm
53577 (external)



Dorado
408 x 614mm
53579 (external)



Terra
408 x 614mm
53581 (external)



Bianco
French Pattern
53583 (external) P5



Dorado
French Pattern
53585 (external) P5



Terra
French Pattern
53587 (external) P5

Made in Italy



Mas De Provence

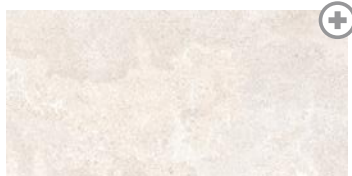
2 colourways, 2 sizes, V2

Features: glazed porcelain wall and floor tile; rectified edge (R/T)

Suggested uses: internal and external floors; wet areas; heavy traffic areas



Cloud R/T
445 x 900mm
52318 (textured) P4



Ivory R/T
445 x 900mm
52317 (textured) P4



Cloud R/T
900 x 900mm
52328 (textured) P4



Ivory R/T
900 x 900mm
52327 (textured) P4

Made in Italy



Aquitaine

3 colourways, 2 sizes, V2

Features: glazed porcelain wall and floor tile; timeless style; additional French Pattern look

Suggested uses: internal and external floors; wet areas; heavy traffic areas; pool surrounds



Beige
408 x 614mm
50512 (matt) P4
50513 (textured) P5



Grigio
408 x 614mm
50517 (matt) P4
50518 (textured) P5



Silver
408 x 614mm
53830 (textured) P5



Beige
French Pattern*
50514 (matt) P4
50515 (textured) P5



Grigio
French Pattern*
50519 (matt) P4
50520 (textured) P5



Silver
French Pattern*
53831 (textured) P5

* French Pattern contains the following sizes: 408 x 614mm + 408 x 408mm + 203 x 408mm + 203 x 203mm = 0.75sqm

Made in Italy

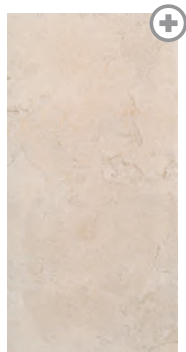


Lagos

2 colourways, 1 size, V3

Features: glazed porcelain wall and floor tile; rectified edge (R/T)

Suggested uses: internal and external floors; wet areas; heavy traffic areas; pool surrounds



Ivory R/T
450 x 900mm
52440 (textured) P5



Light Grey R/T
450 x 900mm
52442 (textured) P5



Lusso

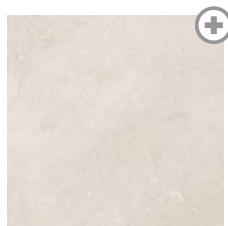
5 colourways, 1 size, V3

Features: glazed porcelain wall and floor tile; rectified edge (R/T)

Suggested uses: internal and external floors; wet areas; heavy traffic areas



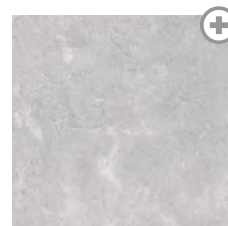
Grigio R/T
600 x 600mm
52934 (in/out) P4



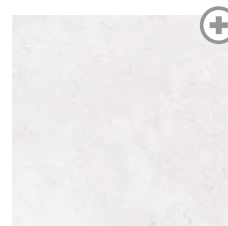
Naturale R/T
600 x 600mm
52935 (in/out) P4



Nero R/T
600 x 600mm
52936 (in/out) P4



Terra R/T
600 x 600mm
52937 (in/out) P4



White R/T
600 x 600mm
52938 (in/out) P4



Riverstone

2 colourways, 2 sizes, V2

Features: glazed porcelain wall and floor tile; rectified edge (R/T)

Suggested uses: internal and external floors; wet areas; heavy traffic areas



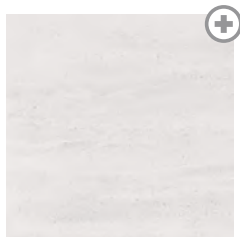
Light Grey R/T
300 x 600mm
53557 (in/out) P4



White R/T
300 x 600mm
53559 (in/out) P4



Light Grey R/T
600 x 600mm
52941 (in/out) P4



White R/T
600 x 600mm
53560 (in/out) P4

Made in Australia

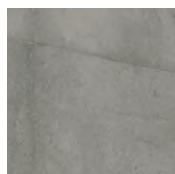


Kempsey

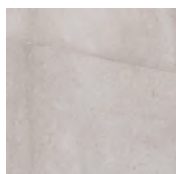
4 colourways, 2 sizes, V2

Features: wall and floor tile; cushion edge; external finish

Suggested uses: internal and external areas, wet areas; different surface finishes allow for seamless lines between living rooms and outdoors



Ash
450 x 450mm
52350 (textured) P5



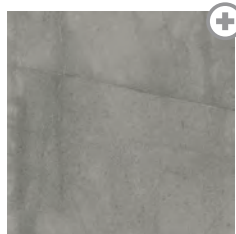
Grey
450 x 450mm
52349 (textured) P5



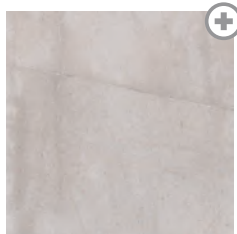
Ivory
450 x 450mm
53910 (textured) P5



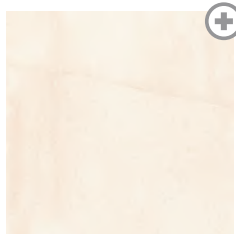
White
450 x 450mm
52348 (textured) P5



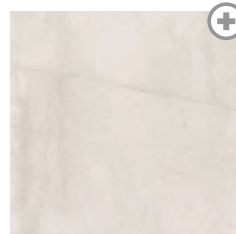
Ash
600 x 600mm*
52359 (textured) P5



Grey
600 x 600mm*
52358 (textured) P5



Ivory
600 x 600mm
53912 (textured) P5



White
600 x 600mm*
52357 (textured) P5

** The 600 x 600mm size comes with a subtle shimmer that enhances the natural features such as veins and pebbles, but is a different surface to the other sizes*

Made in Australia



Albany

3 colourways, 2 sizes, V2

Features: wall and floor tile; cushion edge; external finish

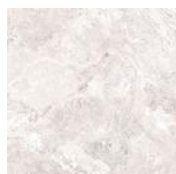
Suggested uses: internal and external areas, wet areas; different surface finishes allow for seamless lines between living rooms and outdoors



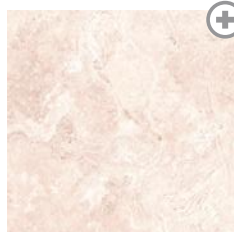
Cream
450 x 450mm
52026 (textured) P5



Grey
450 x 450mm
52032 (textured) P5



White
450 x 450mm
52038 (textured) P5



Cream
600 x 600mm
52028 (textured) P5



Grey
600 x 600mm
52034 (textured) P5



White
600 x 600mm
52040 (textured) P5

Made in Italy



Massive Stone

2 colourways, 1 size, V3

Features: glazed porcelain wall and floor tile; cushion edge

Suggested uses: internal and external floors; wet areas; heavy traffic areas; pool surrounds



Ash
408 x 614mm
52980 (matt) P3
52981 (textured) P5



Moon
408 x 614mm
52972 (matt) P3
52973 (textured) P5

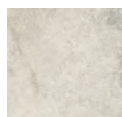


Mars

4 colourways, 4 sizes, V3

Features: glazed porcelain wall and floor tile; rectified edge (R/T)

Suggested uses: internal floors and walls; feature areas; wet areas



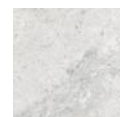
Beige R/T
300 x 300mm
53288 (in/out) P4



Cinder R/T
300 x 300mm
53292 (in/out) P4



Graphite R/T
300 x 300mm
53296 (in/out) P4



Light R/T
300 x 300mm
53284 (in/out) P4



Cinder
398 x 600mm Coping
53654 (textured) P5

Graphite
398 x 600mm Coping
53655 (textured) P5

Light
398 x 600mm Coping
53652 (textured) P5



Beige R/T
300 x 600mm
53289 (in/out) P4



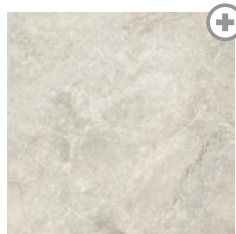
Cinder R/T
300 x 600mm
53293 (in/out) P4



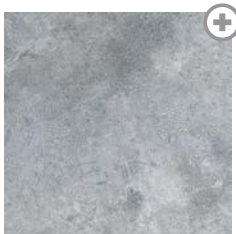
Graphite R/T
300 x 600mm
53297 (in/out) P4



Light R/T
300 x 600mm
53285 (in/out) P4



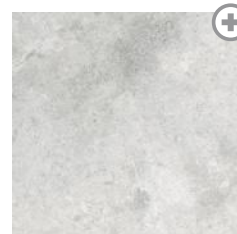
Beige R/T
600 x 600mm
53290 (in/out) P4



Cinder R/T
600 x 600mm
53294 (in/out) P4



Graphite R/T
600 x 600mm
53298 (in/out) P4



Light R/T
600 x 600mm
53286 (in/out) P4

Made in Italy



Treverkmore

3 colourways, 1 size, V3

Features: glazed porcelain wall and floor tile; external finish; cushion edge

Suggested uses: internal floors; wet areas; external floors; decks



Almond
200 x 1200mm
51723 (textured) P5



Coffee
200 x 1200mm
51726 (textured) P5



Oak
200 x 1200mm
51725 (textured) P5





Sydney Metro

Brookvale

271 Harbord Road,
Brookvale NSW 2099
p. 1300 042 531

Miranda

1/189 Port Hacking Road (North),
Miranda NSW 2228
p. 1300 054 756

Narellan

296 Camden Valley Way,
Narellan NSW 2567
p. 1300 062 402

Newport

4/343 Barrenjoey Road,
Newport NSW 2106
p. 1300 854 914

Padstow

107 Fairford Road,
Padstow NSW 2211
p. 1300 068 625

Wentworthville

405 Great Western Highway,
Wentworthville NSW 2145
p. 1300 069 836

Woollahra

146 Edgecliff Road,
Woollahra NSW 2025
p. 1300 195 930

Regional NSW

Beresfield

Unit 3, 26 Balook Drive,
Beresfield NSW 2322
p. 1300 036 944

Coffs Harbour

155 Orlando Street,
Coffs Harbour NSW 2450
p. 1300 042 899

Grafton

56B Pound Street,
Grafton 2460
p. 1300 194 361

Port Macquarie

181 Lake Road,
Port Macquarie NSW 2444
p. 1300 068 875

 colortile.com.au

 [colortile_australia](https://www.instagram.com/colortile_australia)

 [ColorTileAustralia](https://www.facebook.com/ColorTileAustralia)

What is shade variation?

The shade (colour, tone, texture and value) of all ceramic floor tiles vary. To help identify the expected variation, the indicators are:

V1 LOW VARIATION: Least possible shade variation among pieces of tile in a box of this product. When installed, this tile shade provides a uniform appearance and give floors and walls an even harmony.

V2 MODERATE VARIATION: Low to moderate shade variation. Like most natural materials, this tile has a subtle variation that adds a refined modulation to floors and walls.

V3 HIGH VARIATION: Considerable shade variation present among pieces of tile in a box of this product. The tiles share the same core colours, but with more variation between the colours. It provides a spontaneous shade variation within the same colour range that highlights the lustrous texture variations.

V4 RANDOM VARIATION: Highest possible shade variation. For this colours vary from tile to tile. The luxurious shade and colour shifts create customised floor and wall tiles which allow for rich fashion statements to emerge.



Low
Variation



Moderate
Variation



High
Variation



Random
Variation

Shade variation is based on production run. Some tiles look the same when they belong to the same production run, but different when they have been produced in different runs. The changes relate to slight temperature or colouring changes.

RECOMMENDATIONS – Once delivered, check the tiles in all cartons to see if they are the same colour. Also check the code numbers of the boxes to see if they are from the same batch.

