

Reverso

Reverso is an Italian glazed porcelain tile inspired by the beauty of vein cut travertine. Identical to the natural product, this range requires no sealing, does not stain and offers superior performance. Designed for easy-living lifestyles, Reverso is suitable for internal and external floors, including wet areas. This timeless series is available in six colourways, in four different sizes and an external finish.

Avorio



300 x 300mm
51254 (matt) P2



300 x 600mm
51253 (matt) P2



450 x 900mm
51252 (matt) P2
51255 (textured) P5



604 x 906mm
51692 (20mm thick textured) P5

Beige



300 x 300mm
51258 (matt) P2



300 x 600mm
51257 (matt) P2

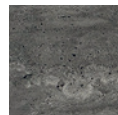


450 x 900mm
51256 (matt) P2
51259 (textured) P5

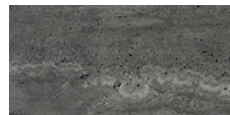


604 x 906mm
51694 (20mm thick textured) P5

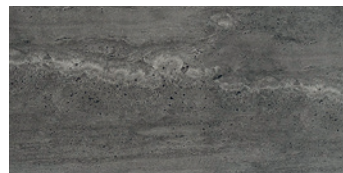
Black



300 x 300mm
51441 (matt) P2



300 x 600mm
51442 (matt) P2



450 x 900mm
51443 (matt) P2
51444 (textured) P5

Grigio



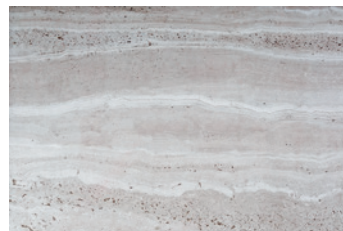
300 x 300mm
51262 (matt) P2



300 x 600mm
51261 (matt) P2



450 x 900mm
51260 (matt) P2
51263 (textured) P5



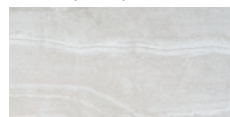
604 x 906mm
51693 (20mm thick textured) P5



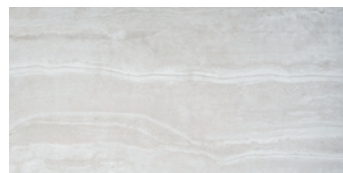
Silver



300 x 300mm
51433 (matt) P2



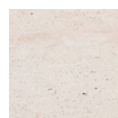
300 x 600mm
51434 (matt) P2



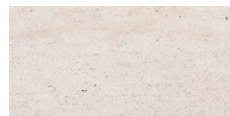
450 x 900mm
51435 (matt) P2
51436 (textured) P5



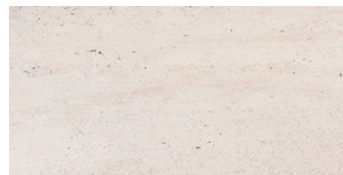
White



300 x 300mm
51437 (matt) P2



300 x 600mm
51438 (matt) P2



450 x 900mm
51439 (matt) P2
51440 (textured) P5

Technical Specification

	Properties	Test Method	Required Value	Value	Applies to
	Water absorption	ISO 10545-3	$\leq 0.5\%$	0.03%	Full range
	Determination of dimensions	ISO 10545-2	Length and width 0.6% Thickness 0.5% Edge straightness 0.5% Surface flatness 0.5%	Complies with standards	Full range
	Breaking strength	ISO 10545-4	≥ 1300 N	Complies with standards	Full range
	Modulus of rupture	ISO 10545-4	≥ 35 N/mm	48.4N/mm	Full range
	Abrasion resistance	ISO 10545-6	≤ 175 mm ³	150mm ³	Full range
	Slip resistance (wet pendulum test)	AS 4586:2013	N/A	P5 – Textured P2 – Natural	Full range
	Chemical resistance	ISO 10545-13	Minimum UB	ULA class	Full range
	Origin	N/A	N/A	Italy	Full range
	Shade variation	N/A	N/A	V3	Full range

Packing Information

Tile description		Quantity per box	Quantity per m2		Quantity per pallet	
Size (mm)	Texture	Pieces	Pieces	Weight	m2	boxes
300 x 300	Matt	11	11.11	17.04 kg	47.52	48
300 x 600	Matt	6	5.56	20.10 kg	43.20	40
450 x 900	Matt Textured	3	2.47	23.50 kg	38.88	32
604 x 906	Textured	1	1.83	44.25 kg	26.26	48



The data and information contained in these specification sheets are indicative only unless stated otherwise.

As ColorTile cannot control the conditions under which these products are manufactured, the specifications supplied should be considered as suggested guidelines only and are subject to batch variation. The information contained in these specification sheets should not be considered a warranty, expressed or implied, including, but not limited to, a warranty of merchantability or fitness for a particular purpose. To the maximum extent permitted by law, ColorTile will not be responsible for damages of any nature resulting from the use or reliance upon the information contained in this data sheet. No express or implied warranties are given in respect of any specification provided herein other than those that cannot be excluded under the Australian Consumer Law.