

Lusso

Lusso is inspired by the natural beauty of stone. The range is created with a unique honed finish which offers the combination of stone and elegance without the maintenance. Available in five colourways – Grigio, Naturale, Nero, Terra and White – and sizes of 73 x 298mm, 300 x 300mm, 300 x 600mm, 450 x 900mm and 600 x 600mm. The 600 x 600mm size has a P4 matt finish making Lusso suitable for internal and external applications, including wet areas.



Grigio

73 x 298mm
52598 (honed)



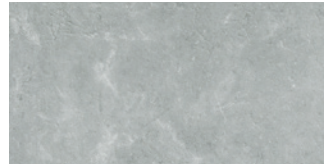
300 x 300mm
52596 (honed)



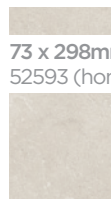
300 x 600mm
52595 (honed)



600 x 600mm
52594 (honed)
52934 (in/out) P4



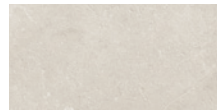
450 x 900mm
52597 (honed)



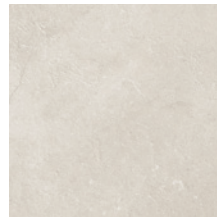
73 x 298mm
52593 (honed)



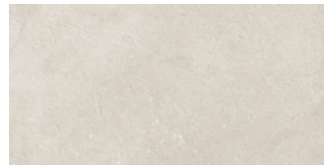
300 x 300mm
52591 (honed)



300 x 600mm
52590 (honed)



600 x 600mm
52589 (honed)
52935 (in/out) P4



450 x 900mm
52592 (honed)

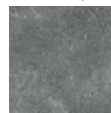


Naturale

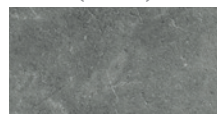
Nero



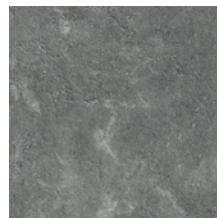
73 x 298mm
52608 (honed)



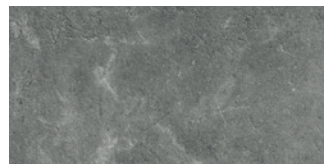
300 x 300mm
52606 (honed)



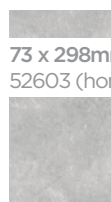
300 x 600mm
52605 (honed)



600 x 600mm
52604 (honed)
52936 (in/out) P4



450 x 900mm
52607 (honed)



73 x 298mm
52603 (honed)



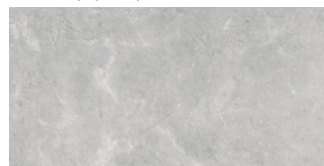
300 x 300mm
52601 (honed)



300 x 600mm
52600 (honed)

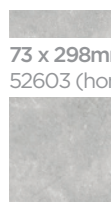


600 x 600mm
52599 (honed)
52937 (in/out) P4



450 x 900mm
52602 (honed)

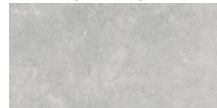
Terra



73 x 298mm
52603 (honed)



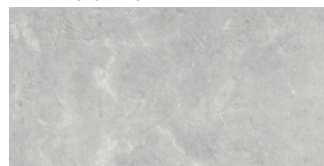
300 x 300mm
52601 (honed)



300 x 600mm
52600 (honed)

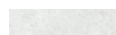


600 x 600mm
52599 (honed)
52937 (in/out) P4



450 x 900mm
52602 (honed)

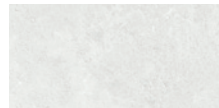
White



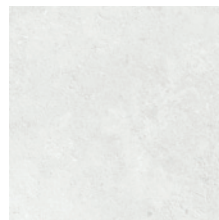
73 x 298mm
52869 (honed)



300 x 300mm
52865 (honed)












300 x 600mm
52866 (honed)



600 x 600mm
52868 (honed)
52938 (in/out) P4



Technical Specification

	Properties	Test Method	Required Value	Value	Applies to
	Water absorption	ASTM C373	$\leq 0.5\%$	$\leq 0.11\%$	Full range
	Breaking strength	ASTM C648	≥ 1100 N	≥ 2143 N	Full range
	Abrasion resistance	ASTM C1027	As reported	Class 3	Full range
	Slip resistance (oil wet ramp test)	AS 4586:2013	N/A	N/A	Full range
	Slip resistance (wet pendulum test)	AS 4586:2013	N/A	P4 – In/out	Full range
	Chemical resistance	ASTM C650	As reported	Class A	Full range
	Stain resistance	ASTM C1378	As reported	Class A	Full range
	Origin	N/A	N/A	China	Full range
	Shade variation	N/A	N/A	V3	Full range

Packing Information

Tile description		Quantity per box	Quantity per m2		Quantity per pallet	
Size (mm)	Texture	Pieces	Pieces	Weight	m2	boxes
73 x 298	Honed	40	44.44	18.00 kg	40.50	45
300 x 300	Honed	11	11.11	22.22 kg	55.44	56
300 x 600	Honed	8	5.56	22.22 kg	57.60	40
450 x 900	Honed	3	2.47	22.22 kg	36.45	30
600 x 600	Honed, In/out	4	2.78	22.22 kg	57.60	40



The data and information contained in these specification sheets are indicative only unless stated otherwise.
As ColorTile cannot control the conditions under which these products are manufactured, the specifications supplied should be considered as suggested guidelines only and are subject to batch variation.
The information contained in these specification sheets should not be considered a warranty, expressed or implied, including, but not limited to, a warranty of merchantability or fitness for a particular purpose.
To the maximum extent permitted by law, ColorTile will not be responsible for damages of any nature resulting from the use or reliance upon the information contained in this data sheet.
No express or implied warranties are given in respect of any specification provided herein other than those that cannot be excluded under the Australian Consumer Law.