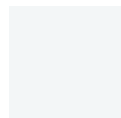


# Polished

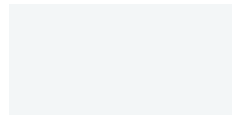
The polished range offers a clean, simplistic look. Available in two neutral tones- Lily Bianco and Super White – and in formats of 300 x 300mm, 300 x 600mm and 600 x 600mm, the range is suitable for indoor wall and floor applications. Polished provides endless possibilities for your home.



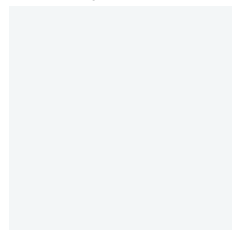
## Super White



300 x 300mm  
50345 (polished)



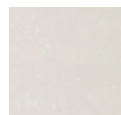
300 x 600mm  
50346 (polished)



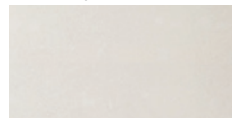
600 x 600mm  
50347 (polished)



## Lily Bianco



300 x 300mm  
50351 (polished)



300 x 600mm  
50352 (polished)



600 x 600mm  
50353 (polished)

# Technical Specification

	Properties	Test Method	Required Value	Value	Applies to
	Water absorption	GB/T 4100-2015	$\leq 0.5\%$	0.06%	Full range
	Determination of dimensions	GB/T 4100-2015	Length and width $\pm 1.0\%$ Thickness $\pm 5.00\%$ Edge straightness $\pm 0.2\%$ Surface flatness $\pm 2\%$	Length and width 0.3% Thickness 0.2% Edge straightness 0.26% Surface flatness 0.27%	Full range
	Breaking strength	GB/T 4100-2015	$\geq 1300$ N	1667 N	Full range
	Modulus of rupture	GB/T 4100-2015	Minimum 35 MPa	38 Mpa	Full range
	Abrasion resistance	GB/T 4100-2015	$\leq 175\text{mm}^3$	113mm <sup>3</sup>	Full range
	Chemical resistance	GB/T 4100-2015	Minimum UB	Class UA	Full range
	Origin	N/A	N/A	China	Full range
	Shade variation	N/A	N/A	V1 – Super White V2 – Lily Bianco	Full range



# Packing Information

Tile description		Quantity per box	Quantity per m2		Quantity per pallet	
Size (mm)	Texture	Pieces	Pieces	Weight	m2	boxes
300 x 300	Polished	25	25.00	17.00 kg	72.00	72
300 x 600	Polished	8	5.56	20.83 kg	57.60	40
600 x 600	Polished	4	2.78	22.00 kg	57.60	40



The data and information contained in these specification sheets are indicative only unless stated otherwise.  
As ColorTile cannot control the conditions under which these products are manufactured, the specifications supplied should be considered as suggested guidelines only and are subject to batch variation.  
The information contained in these specification sheets should not be considered a warranty, expressed or implied, including, but not limited to, a warranty of merchantability or fitness for a particular purpose.  
To the maximum extent permitted by law, ColorTile will not be responsible for damages of any nature resulting from the use or reliance upon the information contained in this data sheet.  
No express or implied warranties are given in respect of any specification provided herein other than those that cannot be excluded under the Australian Consumer Law.