

Kierrastone

A recent addition to our advanced tile technology collection is our Australian-made Kierrastone range. Identical to the natural look of concrete, this range is suitable for both internal and external floor applications, including wet areas. Kierrastone is available in four colourways - ash, charcoal, grey and white - and comes in a variety of sizes as well as matt or textured finishes. This range complements modern, contemporary, industrial and minimalist styles.



Ash



300 x 300mm
51545 (matt) P3



450 x 450mm
51556 (matt) P2
51560 (textured) P5



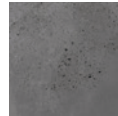
300 x 600mm
51549 (matt) P2



600 x 600mm
51563 (matt) P2
52362 (textured) P5



Charcoal



300 x 300mm
51546 (matt) P3



450 x 450mm
51557 (matt) P2
51561 (textured) P5



300 x 600mm
51550 (matt) P2



600 x 600mm
51564 (matt) P2
52365 (textured) P5



Grey



300 x 300mm
51544 (matt) P3



450 x 450mm
51555 (matt) P2
51559 (textured) P5



300 x 600mm
51548 (matt) P2



600 x 600mm
51562 (matt) P2
52364 (textured) P5



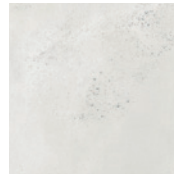
White



300 x 300mm
51547 (matt) P3



300 x 450mm
51889 (gloss)



450 x 450mm
51558 (matt) P2
51708 (textured) P5





300 x 600mm
51551 (matt) P2



600 x 600mm
51565 (matt) P2
52363 (textured) P5

Technical Specification

Properties	Test Method	Required Value	Value	Applies to
 Water absorption	ISO 10545-3	≤ 0.5%	≤ 3%	All finishes
 Determination of dimensions	ISO 10545-2	Length and width ± 0.5% Thickness ± 5.00% Edge straightness ± 0.5% Surface flatness ± 5%	Length and width 0.5% Thickness 5.0% Edge straightness 0.6% Surface flatness 0.5%	All finishes
 Breaking strength	ISO 10545-4	≥ 1300 N	2184 N	All finishes
 Abrasion resistance	ISO 10545-6	Class 3 min	Complies with standards	All finishes
 Slip resistance (wet pendulum test)	Wet pendulum test	N/A	P2 – Matt 450 x450 and Matt 600 x 600 P3 – Matt 300 x 300 P5 – Textured	Matt, textured
 Chemical resistance	ISO 10545-13	GB min.	Complies with standards	All finishes
 Stain resistance	ISO 10545-14	Class 3 min.	Complies with standards	All finishes
 Origin	N/A	N/A	Australia	Full range
 Shade variation	N/A	N/A	V2	Full range

Packing Information

Tile description		Quantity per box	Quantity per m2		Quantity per pallet	
Size (mm)	Texture	Pieces	Pieces	Weight	m2	boxes
300 x 300	Matt	16	11.11	14.05 kg	92.16	64
300 x 450	Gloss	8	7.41	20.00 kg	77.76	72
300 x 600	Matt	8	5.56	20.00 kg	69.12	48
450 x 450	Matt Textured	7	4.93	16.74 kg	113.60	80
600 x 600	Matt - all colours Textured - Ash, Charcoal, Grey	4	2.78	19.97 kg	69.12	48
600 x 600	Textured - White	5	2.78	19.97 kg	64.80	36



The data and information contained in these specification sheets are indicative only unless stated otherwise. As ColorTile cannot control the conditions under which these products are manufactured, the specifications supplied should be considered as suggested guidelines only and are subject to batch variation. The information contained in these specification sheets should not be considered a warranty, expressed or implied, including, but not limited to, a warranty of merchantability or fitness for a particular purpose. To the maximum extent permitted by law, ColorTile will not be responsible for damages of any nature resulting from the use or reliance upon the information contained in this data sheet. No express or implied warranties are given in respect of any specification provided herein other than those that cannot be excluded under the Australian Consumer Law.