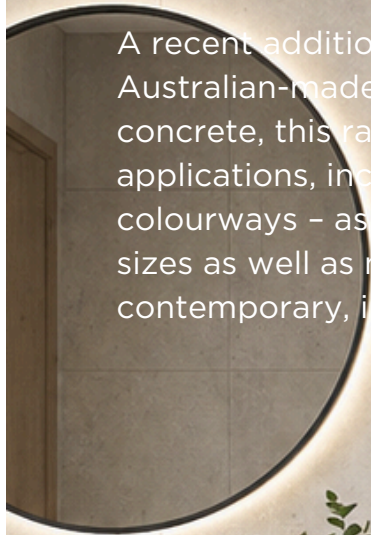


Kierrastone

A recent addition to our advanced tile technology collection is our Australian-made Kierrastone range. Identical to the natural look of concrete, this range is suitable for both internal and external floor applications, including wet areas. Kierrastone is available in four colourways – ash, charcoal, grey and white – and comes in a variety of sizes as well as matt or textured finishes. This range complements modern, contemporary, industrial and minimalist styles.



KIERRASTONE

COLOURS, FORMATS & FINISHES



MATT | P3

White

Grey

Ash

600 x 600mm	●	●	●
450 x 450mm	●	●	●
300 x 600mm	●	●	●
300 x 300mm	●	●	●

TEXTURED | P5

600 x 600mm	●	●	●
450 x 450mm	●	●	●

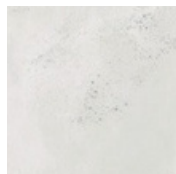
FINISH: **MATT** | CATEGORY: GLAZED FLOOR TILES | EDGE DETAIL: UNRECTIFIED | V RATING: V2
FINISH: **TEXTURED** | CATEGORY: GLAZED FLOOR TILES | EDGE DETAIL: UNRECTIFIED | V RATING: V2



White



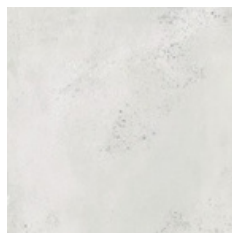
P3 V2 P5



450 x 450mm
51558 (matt)
51708 (textured)



300 x 600mm
51551 (matt)

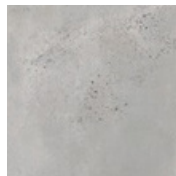


600 x 600mm
51565 (matt)
52363 (textured)

Grey



P3 V2 P5



450 x 450mm
51555 (matt)
51559 (textured)



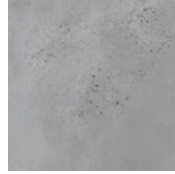
300 x 600mm
51548 (matt)



600 x 600mm
51562 (matt)
52364 (textured)



Ash



450 x 450mm
51556 (matt)
51560 (textured)












600 x 600mm
51563 (matt)
52362 (textured)

V2
P3 P5



Technical Specifications

Properties	Test Method	Required Value	Value	Applies to
 Water absorption	ISO 10545-3	$\leq 0.5\%$	$\leq 3\%$	All finishes
 Determination of dimensions	ISO 10545-2	Length and width $\pm 0.5\%$ Thickness $\pm 5.00\%$ Edge straightness $\pm 0.5\%$ Surface flatness $\pm 5\%$	Length and width 0.5% Thickness 5.0% Edge straightness 0.6% Surface flatness 0.5%	All finishes
 Breaking strength	ISO 10545-4	≥ 1300 N	2184 N	All finishes
 Abrasion resistance	ISO 10545-6	Class 3 mi	Complies with standards	All finishes
 Slip resistance (wet pendulum test)	Wet pendulum test	N/A	P2 - Matt 300 x 600, 450 x 450 and 600 x 600 P3 - Matt 300 x 300 P5 - Textured	Matt, Textured
 Chemical resistance	ISO 10545-13	GB min.	Complies with standards	All finishes
 Stain resistance	ISO 10545-14	Class 3 min.	Complies with standards	All finishes
 Origin	N/A	N/A	Australia	Full range
 Shade variation	N/A	N/A	V2	Full range



Packing Information

Tile Description		Quantity per Box	Quantity per m2		Quantity per Pallet	
Size (mm)	Finish	Pieces	Pieces	Weight	m2	Boxes
300 x 600	Matt	8	5.56	2000kg	69.12	48
450 x 450	Matt Textured	7	4.93	16.74kg	113.60	80
600 x 600	Matt Textured	4	2.78	19.97kg	69.12	48



The data and information contained in these specification sheets are indicative only unless stated otherwise. As ColorTile cannot control the conditions under which these products are manufactured, the specifications supplied should be considered as suggested guidelines only and are subject to batch variation. The information contained in these specification sheets should not be considered a warranty, expressed or implied, including, but not limited to, a warranty of merchantability or fitness for a particular purpose. To the maximum extent permitted by law, ColorTile will not be responsible for damages of any nature resulting from the use or reliance upon the information contained in this data sheet. No express or implied warranties are given in respect of any specification provided herein other than those that cannot be excluded under the Australian Consumer Law.