

# Icestone

A new addition to our advanced tile technology Icestone replicates the look of natural marble without the ongoing maintenance. Available in a high gloss finish only with 3 colourways at 300 x 300mm, Icestone is suitable for wall and floor applications in domestic situations only.



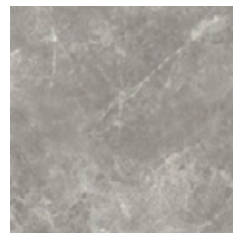
Grey



600 x 600mm  
51828 (polished)

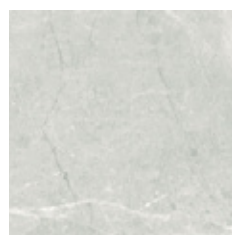


Taupe



600 x 600mm  
51825 (polished)








White



600 x 600mm  
51812 (polished)



# Technical Specification

Properties	Test Method	Required Value	Value	Applies to
 Water absorption	ISO 10545-3	$\leq 0.5\%$	$\leq 0.04\%$	Full range
 Breaking strength	ISO 10545-4	$\geq 1300$ N	2911N	Full range
 Modulus of rupture	ISO 10545-4	Minimum 35 MPa	42.97 Mpa	Full range
 Abrasion resistance	ISO 10545-6	Class 3 min	Class 3	Full range
 Stain resistance	ISO 10545-14	Class 3 min.	Class 5	Full range
 Origin	N/A	N/A	China	Full range
 Shade variation	N/A	N/A	V3	Full range

# Packing Information

Tile description		Quantity per box	Quantity per m2		Quantity per pallet	
Size (mm)	Texture	Pieces	Pieces	Weight	m2	boxes
600 x 600	Polished	4	2.78	22.22 kg	57.60	40



The data and information contained in these specification sheets are indicative only unless stated otherwise. As ColorTile cannot control the conditions under which these products are manufactured, the specifications supplied should be considered as suggested guidelines only and are subject to batch variation. The information contained in these specification sheets should not be considered a warranty, expressed or implied, including, but not limited to, a warranty of merchantability or fitness for a particular purpose. To the maximum extent permitted by law, ColorTile will not be responsible for damages of any nature resulting from the use or reliance upon the information contained in this data sheet. No express or implied warranties are given in respect of any specification provided herein other than those that cannot be excluded under the Australian Consumer Law.