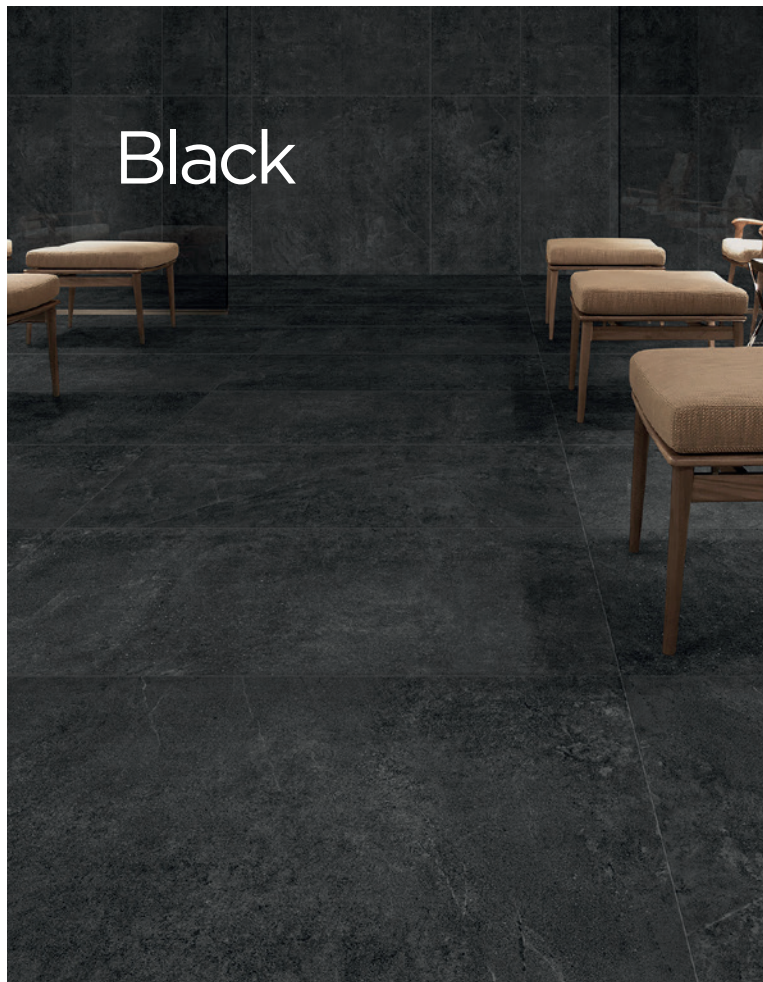


Cemento Pietra

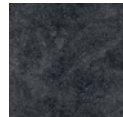
The Cemento Pietra range is reminiscent of the subtle variation of concrete, and fused with the veining of Pietra marble. This sleek and timeless range comes in four colourways of Black, Grey, Tan and White, meeting the needs of every look or style. The Cemento Pietra range also comes in a large array of sizes from 75 x 300mm, 300 x 300mm, 300 x 600mm, 600 x 600mm, and 600 x 1200mm, making this a very versatile range for every need.



Black



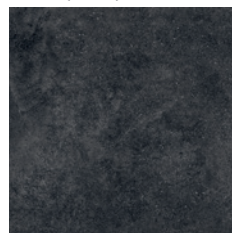
75 x 300mm
53111 (matt) P3



300 x 300mm
53112 (matt) P3



300 x 600mm
53113 (matt) P3



600 x 600mm
53114 (matt) P3

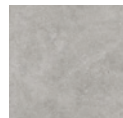


600 x 1200mm
53115 (matt) P3
53117 (textured) P5

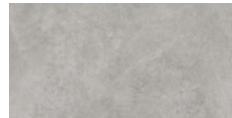
Grey



75 x 300mm
53104 (matt) P3



300 x 300mm
53105 (matt) P3



300 x 600mm
53106 (matt) P3



600 x 600mm
53107 (matt) P3



600 x 1200mm
53108 (matt) P3
53110 (textured) P5



Tan

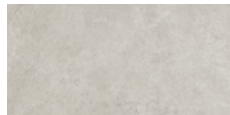
75 x 300mm

53097 (matt) P3



300 x 300mm

53098 (matt) P3



300 x 600mm

53099 (matt) P3



600 x 600mm

53100 (matt) P3



600 x 1200mm

53101 (matt) P3

53103 (textured) P5



White

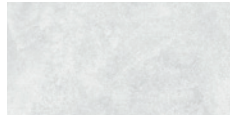
75 x 300mm

53090 (matt) P3



300 x 300mm

53091 (matt) P3



300 x 600mm

53092 (matt) P3



600 x 600mm

53093 (matt) P3










600 x 1200mm

53094 (matt) P3

53096 (textured) P5

Technical Specification

	Properties	Test Method	Required Value	Value	Applies to
	Water absorption	ISO 10545-3	$\leq 0.5\%$	$\leq 0.04\%$	Full range
	Breaking strength	ISO 10545-4	$\geq 1300\text{ N}$	2911N	Full range
	Modulus of rupture	ISO 10545-4	Minimum 35 MPa	42.97 Mpa	Full range
	Abrasion resistance	ISO 10545-6	Class 3 min	Class 3	Full range
	Stain resistance	ISO 10545-14	Class 3 min.	Class 5	Full range
	Origin	N/A	N/A	China	Full range
	Shade variation	N/A	N/A	$\sqrt{3}$	Full range

Packing Information

Tile description		Quantity per box	Quantity per m2		Quantity per pallet	
Size (mm)	Texture	Pieces	Pieces	Weight	m2	boxes
75 x 300	Matt	46	44.44	23.20 kg	49.68	48
300 x 300	Matt	12	11.11	20.20 kg	60.48	56
300 x 600	Matt	8	5.56	20.83 kg	57.60	40
600 x 600	Matt	4	2.78	20.83 kg	57.60	40
600 x 1200	Matt Textured	2	1.39	23.61 kg	80.64	56



The data and information contained in these specification sheets are indicative only unless stated otherwise.
As ColorTile cannot control the conditions under which these products are manufactured, the specifications supplied should be considered as suggested guidelines only and are subject to batch variation.
The information contained in these specification sheets should not be considered a warranty, expressed or implied, including, but not limited to, a warranty of merchantability or fitness for a particular purpose.
To the maximum extent permitted by law, ColorTile will not be responsible for damages of any nature resulting from the use or reliance upon the information contained in this data sheet.
No express or implied warranties are given in respect of any specification provided herein other than those that cannot be excluded under the Australian Consumer Law.