

# ColorTile Highlights

Concrete and Terrazzo look

Autumn 2024



Where style comes to life™



## The terrazzo look

Isla	5
Venistone	7
Oxford	9
Terrazzo	11

## The concrete look

Cemento Pietra	15
Kierrastone	17
Renegade	19
What is shade variation?	25



# The look of terrazzo

- Identical terrazzo look
- Very low maintenance
- Indoor, outdoor and wet area applications
- Easy to clean
- Superior performance
- Added durability
- Porcelain tiles





# Isla

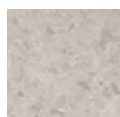
4 colourways, 4 sizes, V2

Features: wall and floor tile; cushion edge, external finish

Suggested uses: internal and external areas, wet areas; different surface finishes allow for seamless lines between living rooms and outdoors



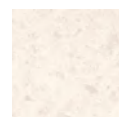
**Beige**  
300 x 300mm  
54107 (matt) P3



**Grey**  
300 x 300mm  
52758 (matt) P3



**Ivory**  
300 x 300mm  
54026 (matt) P3



**White**  
300 x 300mm  
52757 (matt) P3



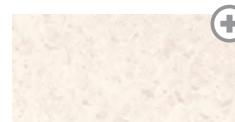
**Beige**  
300 x 600mm  
54108 (matt) P3



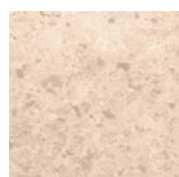
**Grey**  
300 x 600mm  
54024 (matt) P3



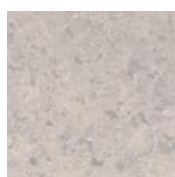
**Ivory**  
300 x 600mm  
54027 (matt) P3



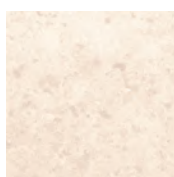
**White**  
300 x 600mm  
54022 (matt) P3



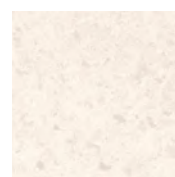
**Beige**  
450 x 450mm  
54110 (matt) P3  
54111 (textured) P5



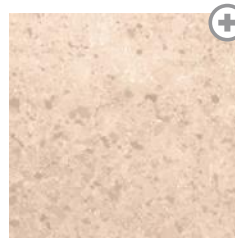
**Grey**  
450 x 450mm  
52761 (matt) P3  
52764 (textured) P5



**Ivory**  
450 x 450mm  
54028 (matt) P3  
54029 (textured) P5



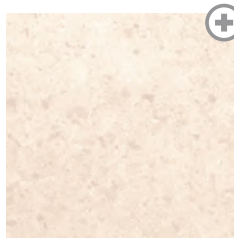
**White**  
450 x 450mm  
52760 (matt) P3  
52763 (textured) P5



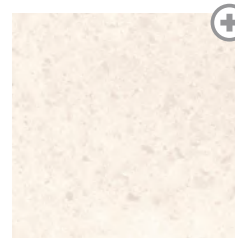
**Beige**  
600 x 600mm  
54112 (matt) P3  
54113 textured P5



**Grey**  
600 x 600mm  
54025 (matt) P3  
54071 textured P5



**Ivory**  
600 x 600mm  
54030 (matt) P3  
54070 textured P5



**White**  
600 x 600mm  
54023 (matt) P3  
54073 textured P5





# Venistone

5 colourways, 4 sizes, V2

Features: glazed porcelain wall and floor tile; rectified edge (R/T)

Suggested uses: internal and external floors; wet areas; heavy traffic areas



**Beige R/T**  
300 x 300mm  
(48 faces)  
53995 (in/out) P4



**Charcoal R/T**  
300 x 300mm  
(48 faces)  
53998 (in/out) P4



**Dark Grey R/T**  
300 x 300mm  
(48 faces)  
53997 (in/out) P4



**Light Grey R/T**  
300 x 300mm  
(48 faces)  
53996 (in/out) P4



**White R/T**  
300 x 300mm  
(48 faces)  
53994 (in/out) P4



**Beige R/T**  
300 x 600mm  
(24 faces)  
53990 (in/out) P4



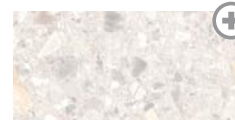
**Charcoal R/T**  
300 x 600mm  
(24 faces)  
53993 (in/out) P4



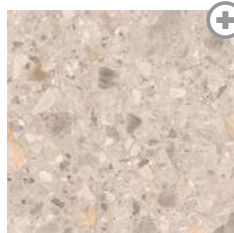
**Dark Grey R/T**  
300 x 600mm  
(24 faces)  
53992 (in/out) P4



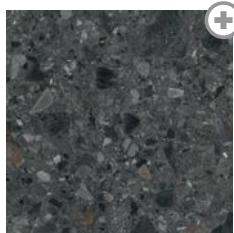
**Light Grey R/T**  
300 x 600mm  
(24 faces)  
53991 (in/out) P4



**White R/T**  
300 x 600mm  
(24 faces)  
53989 (in/out) P4



**Beige R/T**  
600 x 600mm  
(12 faces)  
53985 (in/out) P4



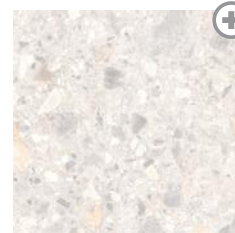
**Charcoal R/T**  
600 x 600mm  
(12 faces)  
53988 (in/out) P4



**Dark Grey R/T**  
600 x 600mm  
(12 faces)  
53987 (in/out) P4



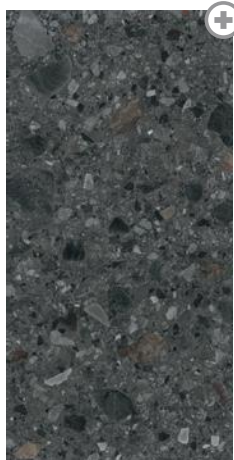
**Light Grey R/T**  
600 x 600mm  
(12 faces)  
53986 (in/out) P4



**White R/T**  
600 x 600mm  
(12 faces)  
53984 (in/out) P4



**Beige R/T**  
600 x 1200mm  
(6 faces)  
53980 (in/out) P4



**Charcoal R/T**  
600 x 1200mm  
(6 faces)  
53983 (in/out) P4



**Dark Grey R/T**  
600 x 1200mm  
(6 faces)  
53982 (in/out) P4



**Light Grey R/T**  
600 x 1200mm  
(6 faces)  
53981 (in/out) P4



**White R/T**  
600 x 1200mm  
(6 faces)  
53979 (in/out) P4

Made in Australia



# Oxford

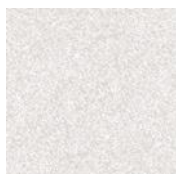
3 colourways, 1 size, V1

Features: wall and floor tile; cushion edge

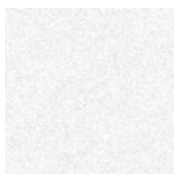
Suggested uses: internal and external areas: wet areas



**Ash**  
450 x 450mm  
53553 (matt) P3



**Grey**  
450 x 450mm  
53552 (matt) P3



**White**  
450 x 450mm  
53551 (matt) P3

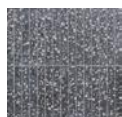


# Terrazzo

3 colourways, 4 sizes, V2

Features: glazed porcelain wall and floor tile; terrazzo look; rectified edge (R/T)

Suggested uses: internal walls and floors; wet areas; feature walls



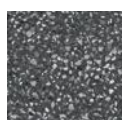
**Dark Grey R/T**  
300 x 300mm  
52449 (matt) P3



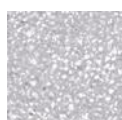
**Grey R/T**  
300 x 300mm  
53450 (matt) P3



**Light Grey R/T**  
300 x 300mm  
53451 (matt) P3



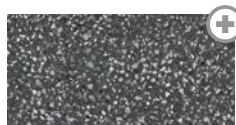
**Dark Grey R/T**  
300 x 300mm  
52509 (matt) P3



**Grey R/T**  
300 x 300mm  
52502 (matt) P3



**Light Grey R/T**  
300 x 300mm  
52506 (matt) P3



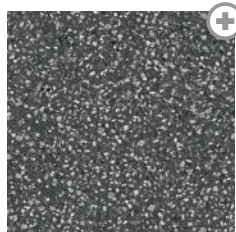
**Dark Grey R/T**  
300 x 600mm  
52508 (matt) P3



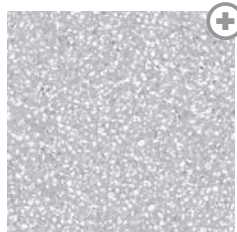
**Grey R/T**  
300 x 600mm  
52501 (matt) P3



**Light Grey R/T**  
300 x 600mm  
52505 (matt) P3



**Dark Grey R/T**  
600 x 600mm  
52507 (matt) P3



**Grey R/T**  
600 x 600mm  
52500 (matt) P3



**Light Grey R/T**  
600 x 600mm  
52504 (matt) P3



# The look of concrete

- Identical concrete/minimalistic look
- Very low maintenance
- Indoor, outdoor and wet area application
- No sealing required
- Easy to clean
- No staining
- Superior performance
- Glazed porcelain tiles





# Cemento Pietra

4 colourways, 5 sizes, V2

Features: glazed porcelain wall and floor tile; rectified edge (R/T)

Suggested uses: internal and external floors; wet areas; heavy traffic areas; pool surrounds



**Black R/T**  
75 x 300mm  
53729 (in/out)



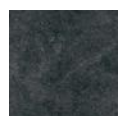
**Grey R/T**  
75 x 300mm  
53734 (in/out)



**Tan R/T**  
75 x 300mm  
53739 (in/out)



**White R/T**  
75 x 300mm  
53744 (in/out)



**Black R/T**  
300 x 300mm  
53726 (in/out)



**Grey R/T**  
300 x 300mm  
53731 (in/out)



**Tan R/T**  
300 x 300mm  
53736 (in/out)



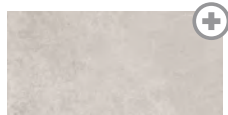
**White R/T**  
300 x 300mm  
53741 (in/out)



**Black R/T**  
300 x 600mm  
53727 (in/out)



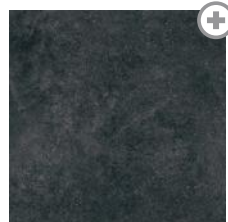
**Grey R/T**  
300 x 600mm  
53732 (in/out)



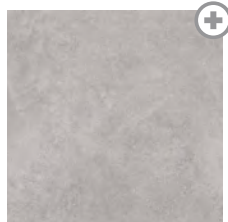
**Tan R/T**  
300 x 600mm  
53737 (in/out)



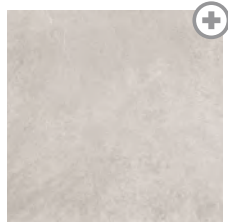
**White R/T**  
300 x 600mm  
53742 (in/out)



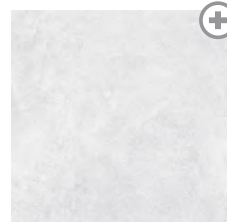
**Black R/T**  
600 x 600mm  
53728 (in/out)



**Grey R/T**  
600 x 600mm  
53733 (in/out)



**Tan R/T**  
600 x 600mm  
53738 (in/out)



**White R/T**  
600 x 600mm  
53743 (in/out)



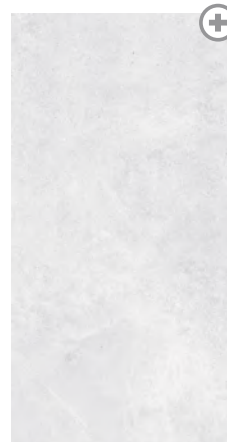
**Black R/T**  
600 x 1200mm  
53730 (in/out)



**Grey R/T**  
600 x 1200mm  
53735 (in/out)



**Tan R/T**  
600 x 1200mm  
53740 (in/out)



**White R/T**  
600 x 1200mm  
53745 (in/out)

Made in Australia



# Kierrastone

4 colourways, 4 sizes, V2

Features: wall and floor tile; cushion edge; external finish

Suggested uses: internal and external areas, wet areas; different surface finishes allow for seamless lines between living rooms and outdoors



**Ash**  
300 x 300mm  
51545 (matt) P3



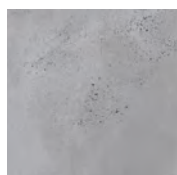
**Charcoal**  
300 x 300mm  
51546 (matt) P3



**Grey**  
300 x 300mm  
51544 (matt) P3



**White**  
300 x 300mm  
51547 (matt) P3



**Ash**  
450 x 450mm  
51556 (matt) P3  
51560 (textured) P5



**Charcoal**  
450 x 450mm  
51557 (matt) P3  
51561 (textured) P5



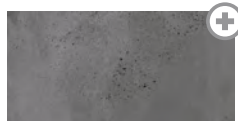
**Grey**  
450 x 450mm  
51555 (matt) P3  
51559 (textured) P5



**White**  
450 x 450mm  
51558 (matt) P3  
51708 (textured) P5



**Ash**  
300 x 600mm  
51549 (matt) P3



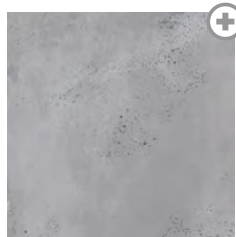
**Charcoal**  
300 x 600mm  
51550 (matt) P3



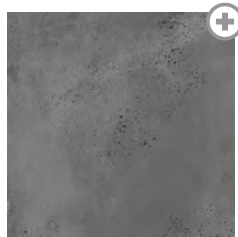
**Grey**  
300 x 600mm  
51548 (matt) P3



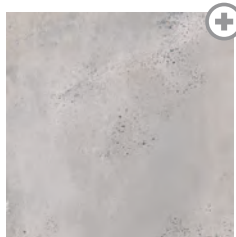
**White**  
300 x 600mm  
51551 (matt) P3



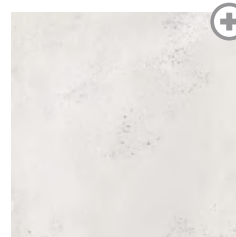
**Ash**  
600 x 600mm  
51563 (matt) P3  
52362 (textured) P5



**Charcoal**  
600 x 600mm  
51564 (matt) P3  
52365 (textured) P5



**Grey**  
600 x 600mm  
51562 (matt) P3  
52364 (textured) P5



**White**  
600 x 600mm  
51565 (matt) P3  
52363 (textured) P5

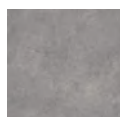
Made in Australia

# Renegade

6 colourways, 4 sizes, V2

Features: wall and floor tile; cushion edge, external finish

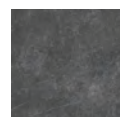
Suggested uses: internal and external areas, wet areas; different surface finishes allow for seamless lines between living rooms and outdoors



**Ash**  
300 x 300mm  
53543 (matt) P3



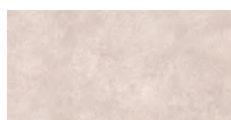
**Beige**  
300 x 300mm  
50567 (matt) P3



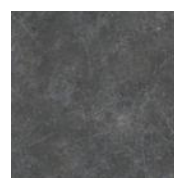
**Black**  
300 x 300mm  
50570 (matt) P3



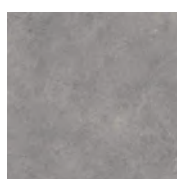
**Ash**  
300 x 600mm  
53838 (matt) P3



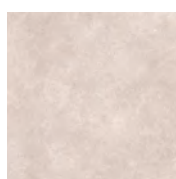
**Beige**  
300 x 600mm  
53835 (matt) P3



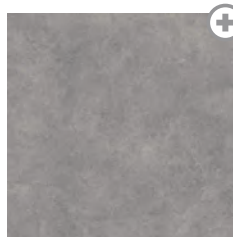
**Black**  
450 x 450mm  
50579 (matt) P3  
50580 (textured) P5



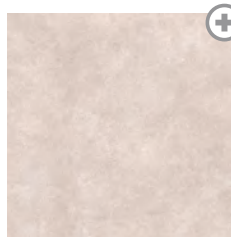
**Ash**  
450 x 450mm  
53544 (matt) P3  
53545 (textured) P5



**Beige**  
450 x 450mm  
50574 (matt) P3  
50946 (textured) P5



**Ash**  
600 x 600mm  
53546 (matt) P3  
53845 (textured) P5



**Beige**  
600 x 600mm  
52919 (matt) P3  
53847 (textured) P5

# Renegade (continued)



**Grey**  
300 x 300mm  
50566 (matt) P3



**Latte**  
300 x 300mm  
50569 (matt) P3



**White**  
300 x 300mm  
50565 (matt) P3



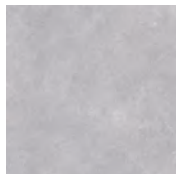
**Grey**  
300 x 600mm  
53837 (matt) P3



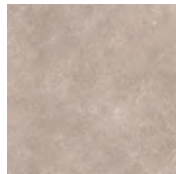
**Latte**  
300 x 600mm  
53836 (matt) P3



**White**  
300 x 600mm  
53834 (matt) P3



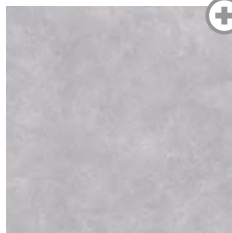
**Grey**  
450 x 450mm  
50572 (matt) P3  
50573 (textured) P5



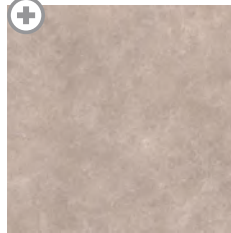
**Latte**  
450 x 450mm  
50577 (matt) P3  
50578 (textured) P5



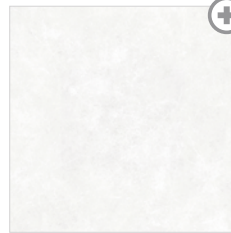
**White**  
450 x 450mm  
50571 (matt) P3  
51709 (textured) P5



**Grey**  
600 x 600mm  
52918 (matt) P3  
53849 (textured) P5



**Latte**  
600 x 600mm  
53888 (matt) P3  
53848 (textured) P5



**White**  
600 x 600mm  
52917 (matt) P3  
53846 (textured) P5









## Sydney Metro

### **Brookvale**

271 Harbord Road,  
Brookvale NSW 2099  
p. 1300 042 531

### **Miranda**

1/189 Port Hacking Road (North),  
Miranda NSW 2228  
p. 1300 054 756

### **Narellan**

296 Camden Valley Way,  
Narellan NSW 2567  
p. 1300 062 402

### **Newport**

4/343 Barrenjoey Road,  
Newport NSW 2106  
p. 1300 854 914

### **Padstow**

107 Fairford Road,  
Padstow NSW 2211  
p. 1300 068 625

### **Wentworthville**

405 Great Western Highway,  
Wentworthville NSW 2145  
p. 1300 069 836

### **Woollahra**

146 Edgecliff Road,  
Woollahra NSW 2025  
p. 1300 195 930

## Regional NSW

### **Beresfield**

Unit 3, 26 Balook Drive,  
Beresfield NSW 2322  
p. 1300 036 944

### **Coffs Harbour**

155 Orlando Street,  
Coffs Harbour NSW 2450  
p. 1300 042 899

### **Grafton**

56B Pound Street,  
Grafton 2460  
p. 1300 194 361

### **Port Macquarie**

181 Lake Road,  
Port Macquarie NSW 2444  
p. 1300 068 875

 [colortile.com.au](https://colortile.com.au)

 [colortile\\_australia](https://www.instagram.com/colortile_australia)

 [ColorTileAustralia](https://www.facebook.com/ColorTileAustralia)

## What is shade variation?

The shade (colour, tone, texture and value) of all ceramic floor tiles vary. To help identify the expected variation, the indicators are:

**V1 LOW VARIATION:** Least possible shade variation among pieces of tile in a box of this product. When installed, this tile shade provides a uniform appearance and give floors and walls an even harmony.

**V2 MODERATE VARIATION:** Low to moderate shade variation. Like most natural materials, this tile has a subtle variation that adds a refined modulation to floors and walls.

**V3 HIGH VARIATION:** Considerable shade variation present among pieces of tile in a box of this product. The tiles share the same core colours, but with more variation between the colours. It provides a spontaneous shade variation within the same colour range that highlights the lustrous texture variations.

**V4 RANDOM VARIATION:** Highest possible shade variation. For this colours vary from tile to tile. The luxurious shade and colour shifts create customised floor and wall tiles which allow for rich fashion statements to emerge.



Low  
Variation



Moderate  
Variation



High  
Variation



Random  
Variation

Shade variation is based on production run. Some tiles look the same when they belong to the same production run, but different when they have been produced in different runs. The changes relate to slight temperature or colouring changes.

**RECOMMENDATIONS** – Once delivered, check the tiles in all cartons to see if they are the same colour. Also check the code numbers of the boxes to see if they are from the same batch.

